

# CORMACH

# 180000 E

Quality Management  
ISO 9001:2008

► Voluntary participation  
in regular monitoring



[www.cormach.com](http://www.cormach.com)



# CORMAGH

## 180000E









# ... ABOUT ANCIENT



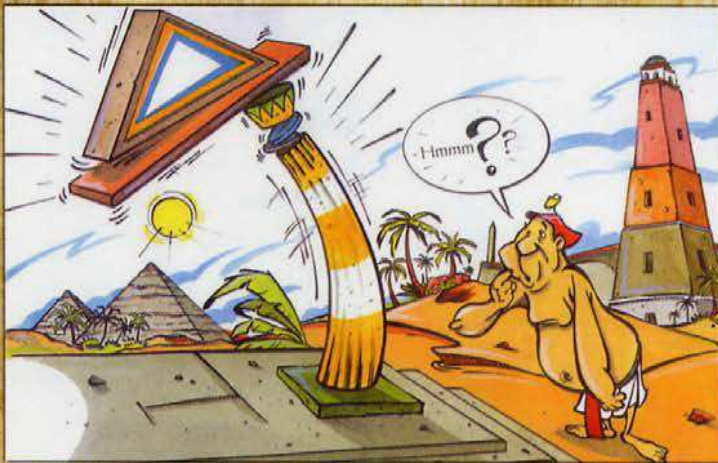
KRANKAMON, PHAROAH OF EGYPT, DREAMED ABOUT HIS PYRAMID, THAT IN HIS INTENT, SHOULD BECOME THE BIGGEST EVER BUILD.

"Phew! What hard work. Is it possible that anybody can think of a better pushing system?"



THE BUILDING PROCESS WAS SLOW BEING HIS RESOURCES LIMITED TO SLAVES AND MATERIAL.

"But, why is it such hard work using only one support?"



THE PHAROAH LIVED A SHORT AND HARD LIFE AND THE KRANKAMON PYRAMIDS REMAINED A DREAM.

"There is something illogical in this system. The offset boom unbalances the structure."

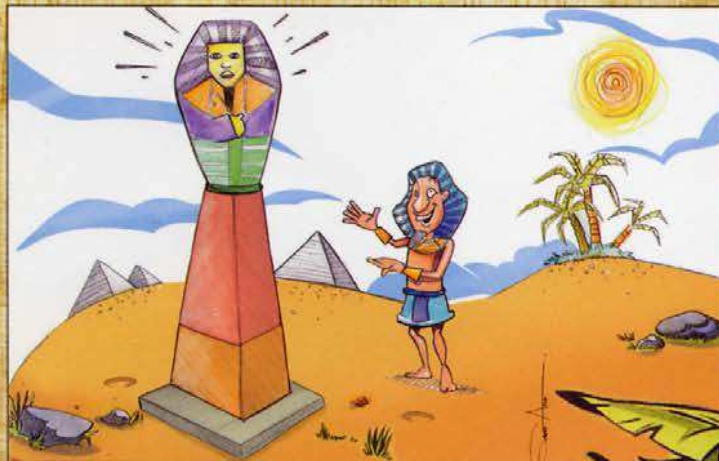
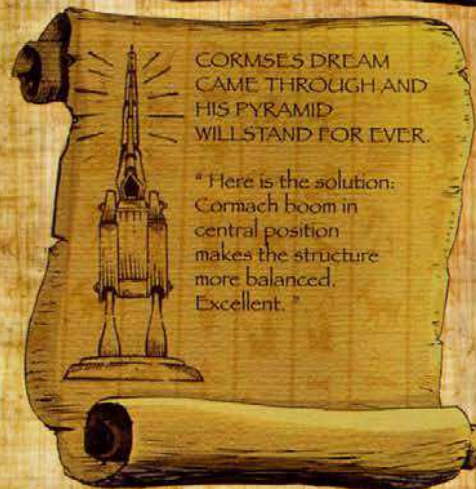
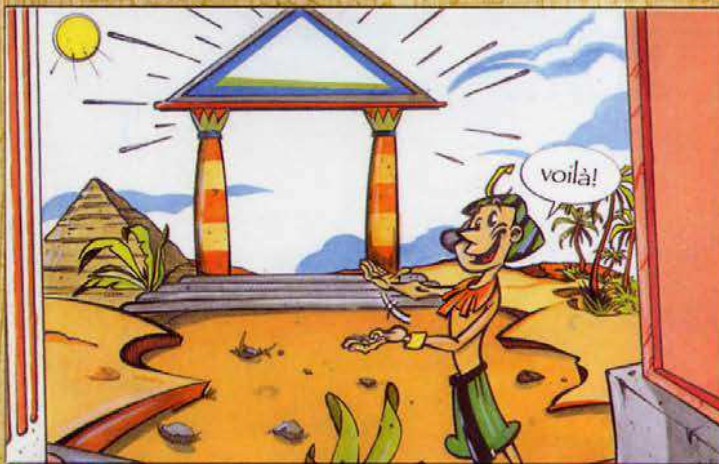
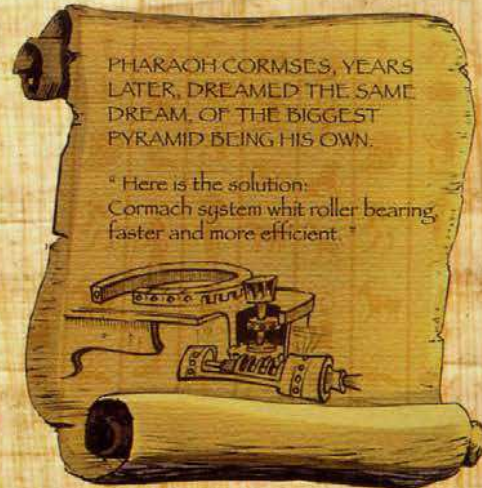
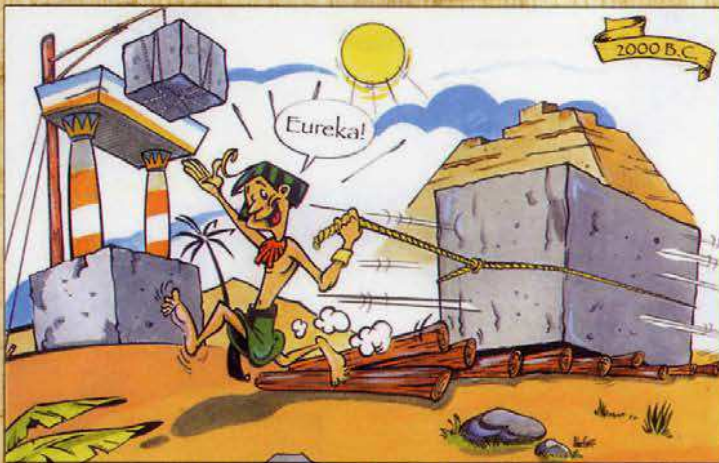


LATER THE PHAROAH DECIDED TO BUILD AN OBELISK WITH HIS IMAGE ON TOP.

Why is the structure so weak? It cannot carry the weight of my statue!



# EGYPT MANUSCRIPTS





# 180000E









180000E

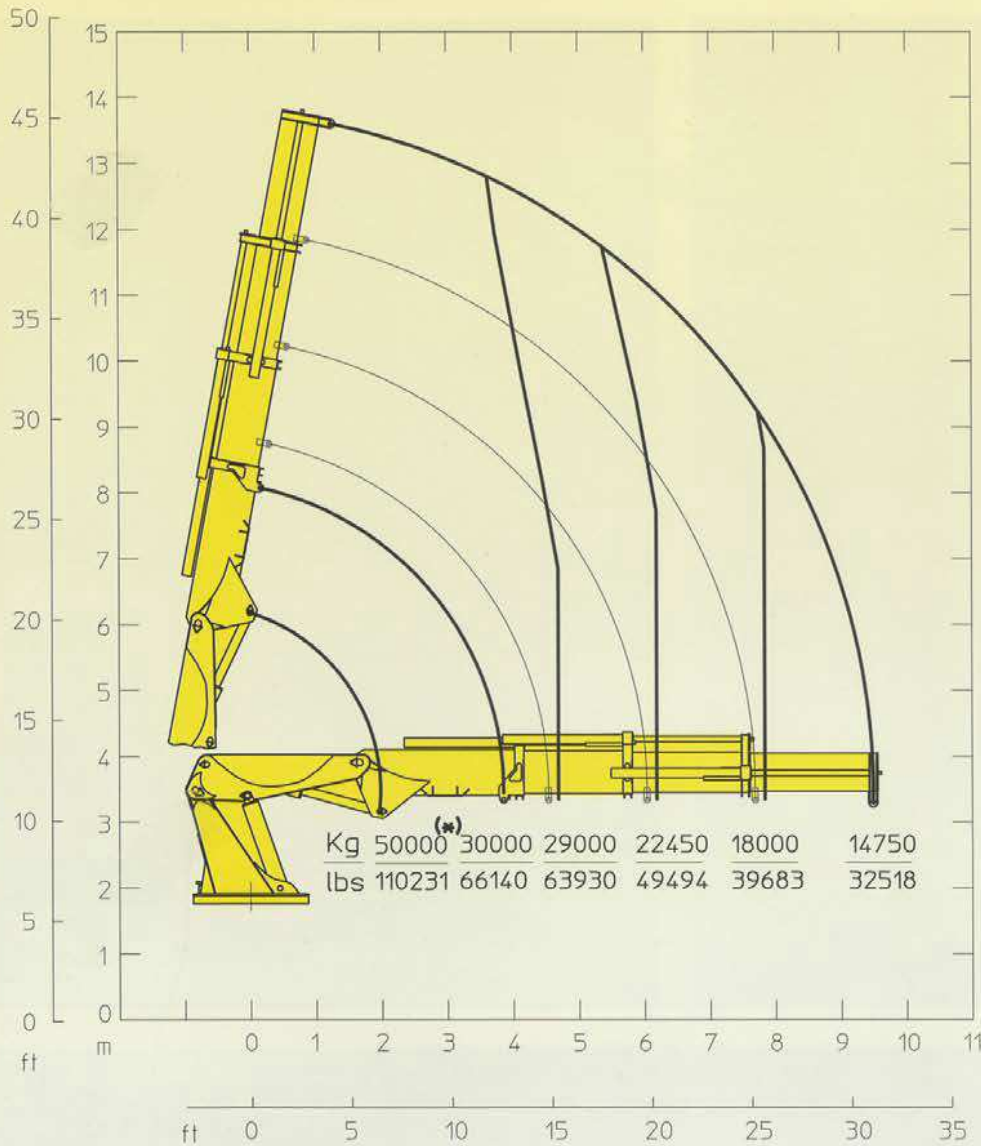






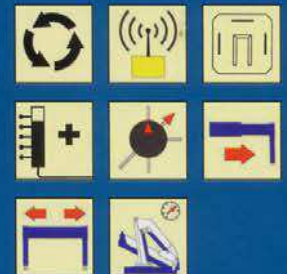


# 180000 E3

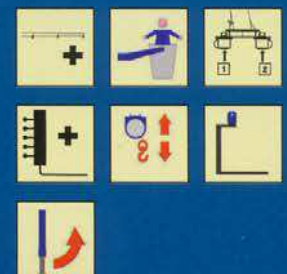


E3	E3	
171000 daN*m	1,237,082 Lb*ft	Momento statico massimo al perno torretta • Max. static moment at the turret pin Moment statique max. a l'axe de la tourelle • Max. statisches ubmoment am kransaulenbolzen
9.48 m	31'1"	Sbraccio idraulico • Hydraulic boom length Longueur du bras hydraulique • Hydraulic reichweite
		Sbraccio con prolunghe manuali • Bomm length with manual extensions Longueur du bras avec rallonges manuelles
11000 daN*m	79,578 Lb*ft	Coppia di rotazione • Slew torque • Moment de rotation • Drehmoment
90 sec 360°	90 sec 360°	Tempo di rotazione • Slewing speed • Temp de rotation • Schwenkgeschwindigkeit
4,92+4,92 m	16'2"+16'2"	Uscita stabilizzatori (*) • Outriggers extensions (*) Sortie des bequilles (*) • Breite der abstützung (*)
12107 m	39'9"	Larghezza stabilizzatori (**) • Outriggers width (**) Largeur des bequilles (**) • Breite der abstützung (**)
3485 mm	11'5"	Lunghezza • Length • Longeur • Länge
2458 mm	8'1"	Larghezza • Width • Largeur • Breite
2710 mm	8'11"	Altezza • Height • Huteur • Höhe
16310 kg	35,9+57 lbs	Peso (senza olio e montaggio) • Weight (without oil and fitting) Poids (sans huile et montage) • Gewicht (ohne öl und ohne)
115 l/min	30 us gal/min	Portata pompa (***) • Pump delivery (***) • Capacité de la pompe (***) • Pumpenheistung (***)
300 bar	4266 psi	Pressione • Pressure • Pression • Druck
450 l	119 us gal	Capacità serbatoio olio • Oil tank capacity • Capacité de reservoir d'huile • Öl tank inhalt

## STANDARD



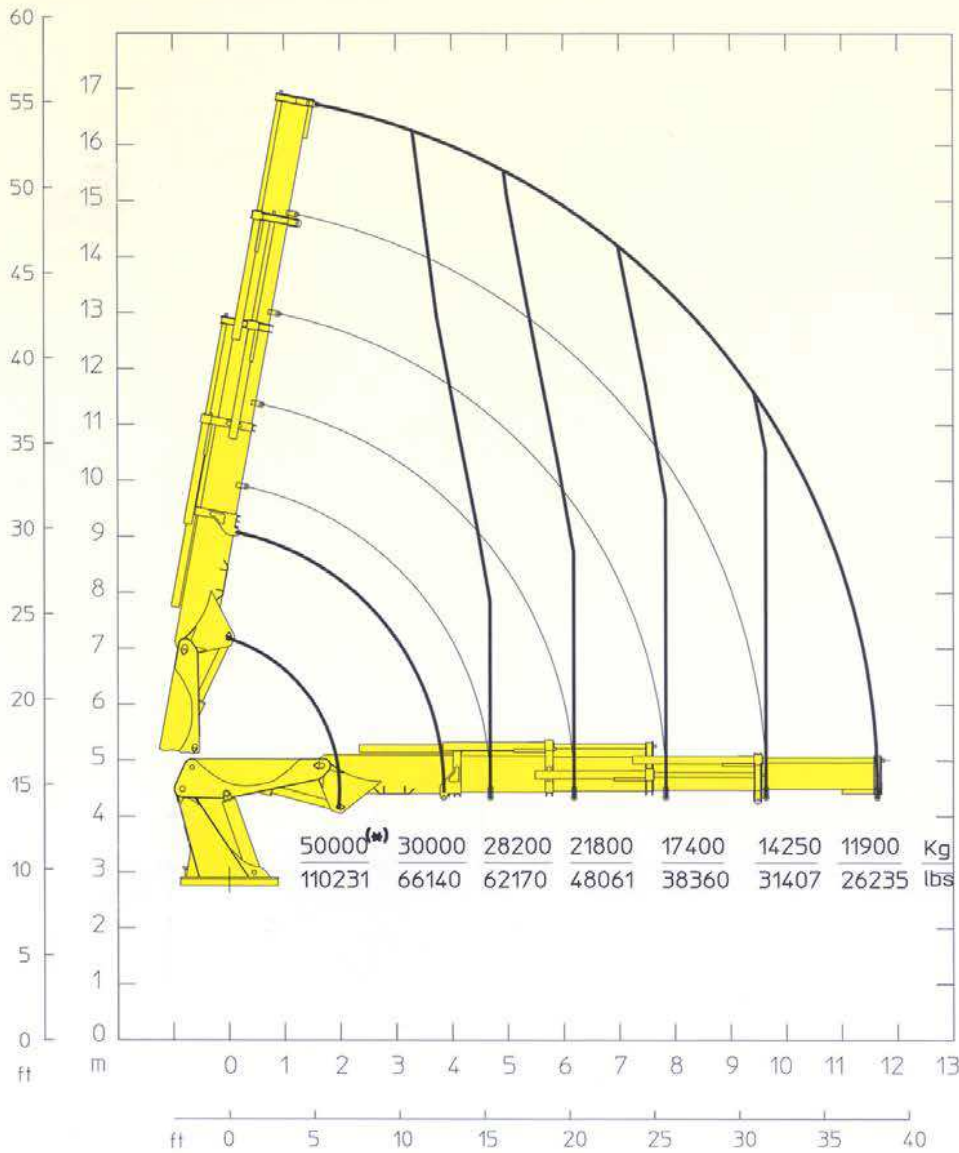
## OPTIONAL





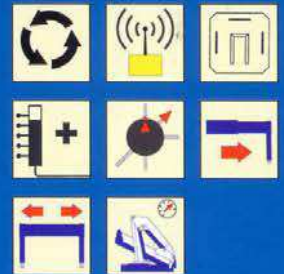
# 180000 E4

# CORMAGH

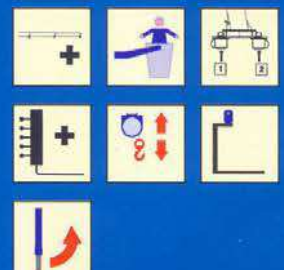


E4	E4	
171000 daN*m	1,237,082 Lb*ft	Momento statico massimo al perno torretta • Max. static moment at the turret pin Moment statique max. a l'axe de la tourelle • Max. statisches ubmoment am kranseulenbolzen
11.63 m	38'2"	Sbraccio idraulico • Hydraulic boom length Longueur du bras hydraulique • Hydraulic reichweite
		Sbraccio con prolunghe manuali • Boom length with manual extensions Longueur du bras avec rallonges manuelles
11000 daN*m	79,578 Lb*ft	Coppia di rotazione • Slew torque • Moment de rotation • Drehmoment
90 sec 360°	90 sec 360°	Tempo di rotazione • Slewing speed • Temp de rotation • Schwenkgeschwindigkeit
4,92+4,92 m	16'2"+16'2"	Uscita stabilizzatori (*) • Outriggers extensions (*) Sortie des bequilles (*) • Breite der abstützung (*)
12107 m	39'9"	Larghezza stabilizzatori (**) • Outriggers width (**) Largeur des bequilles (**) • Breite der abstützung (**)
3485 mm	11'5"	Lunghezza • Length • Longueur • Länge
2458 mm	8'1"	Larghezza • Width • Largeur • Breite
2710 mm	8'11"	Altezza • Height • Hauteur • Höhe
16840 kg	37,126 lbs	Peso (senza olio e montaggio) • Weight (without oil and fitting) Poids (sans huile et montage) • Gewicht (ohne öl und ohne)
115 l/min	30 us gal/min	Portata pompa (***) • Pump delivery (***) • Capacité de la pompe (***) • Pumpenleistung (***)
300 bar	4266 psi	Pressione • Pressure • Pression • Druck
450 l	119 us gal	Capacità serbatoio olio • Oil tank capacity • Capacité de reservoir d'huile • Öl tank inhalt

## STANDARD

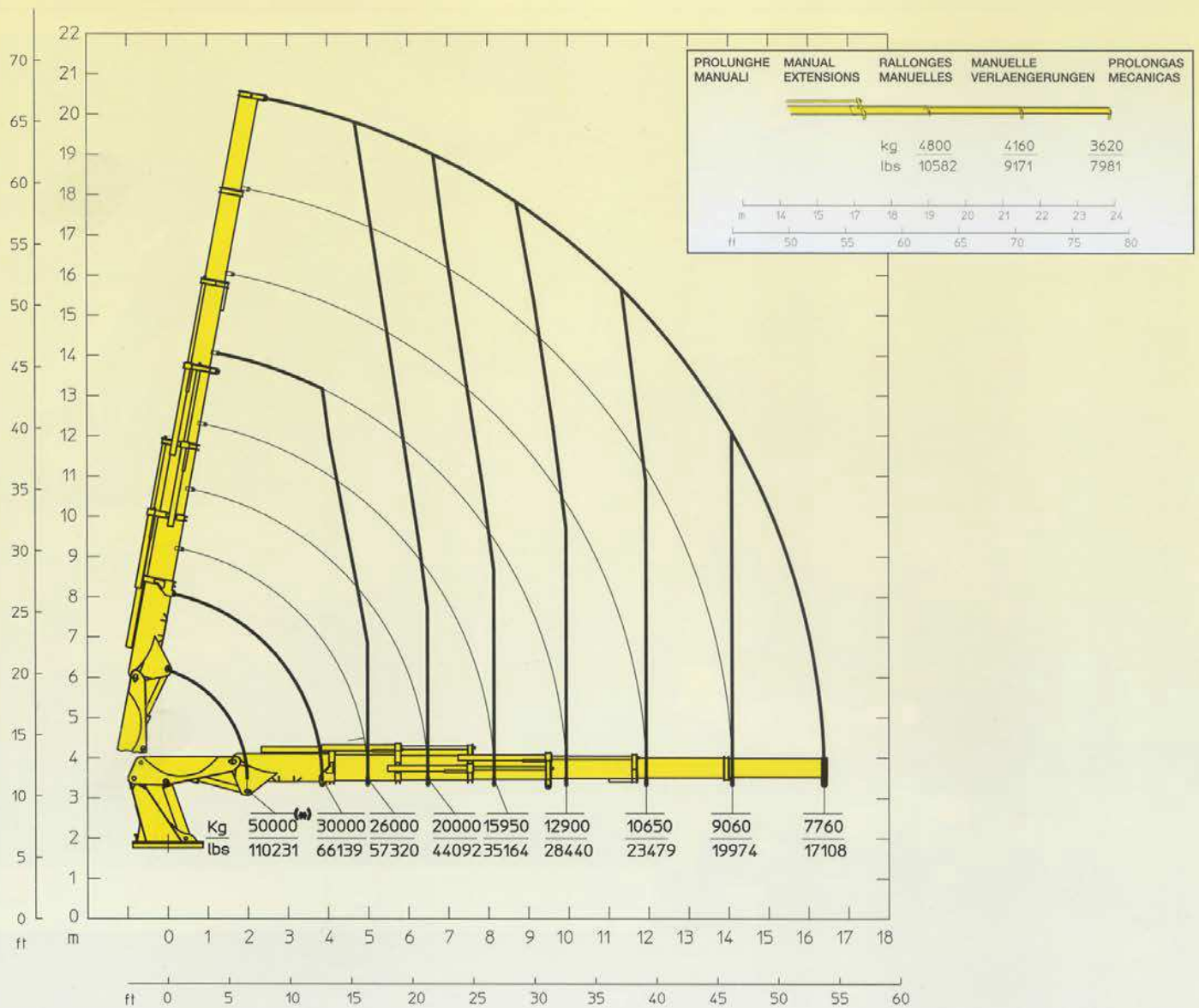


## OPTIONAL



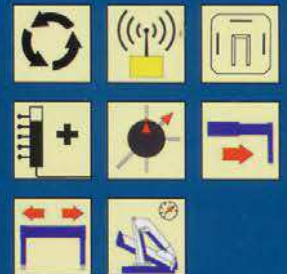


# 180000 E6

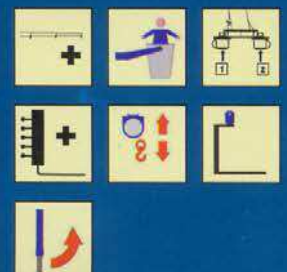


E6	E6	
171000 daN*m	1,237,082 Lb*ft	Momento statico massimo al perno torretta • Max. static moment at the turret pin Moment statique max. a l'axe de la tourelle • Max. statisches ubmoment am kran-saulenbolzen
16.38 m	53'9"	Sbraccio idraulico • Hydraulic boom length Longueur du bras hydraulique • Hydraulic reichweite
		Sbraccio con prolunghe manuali • Boom length with manual extensions Longueur du bras avec rallonges manuelles
11000 daN*m	79,578 Lb*ft	Coppia di rotazione • Slew torque • Moment de rotation • Drehmoment
90 sec 360°	90 sec 360°	Tempo di rotazione • Slewing speed • Temp de rotation • Schwenkgeschwindigkeit
4,92+4,92 m	16'2"+16'2"	Uscita stabilizzatori (*) • Outriggers extensions (*) Sortie des bequilles (*) • Breite der abstützung (*)
12107 m	39'9"	Larghezza stabilizzatori (**) • Outriggers width (**) Largeur des bequilles (**) • Breite der abstützung (**)
3485 mm	11'5"	Lunghezza • Length • Longueur • Länge
2458 mm	8'1"	Larghezza • Width • Largeur • Breite
2710 mm	8'11"	Altezza • Height • Huteur • Höhe
17750 kg	39,132 lbs	Peso (senza olio e montaggio) • Weight (without oil and fitting) Poids (sans huile et montage) • Gewicht (ohne öl und ohne)
115 l/min	30 us gal/min	Portata pompa (****) • Pump delivery (****) • Capacité de la pompe (****) • Pumpenheistung (****)
300 bar	4266 psi	Pressione • Pressure • Pression • Druck
450 l	119 us gal	Capacità serbatoio olio • Oil tank capacity • Capacité de reservoir d'huile • Öl tank inhalt

## STANDARD



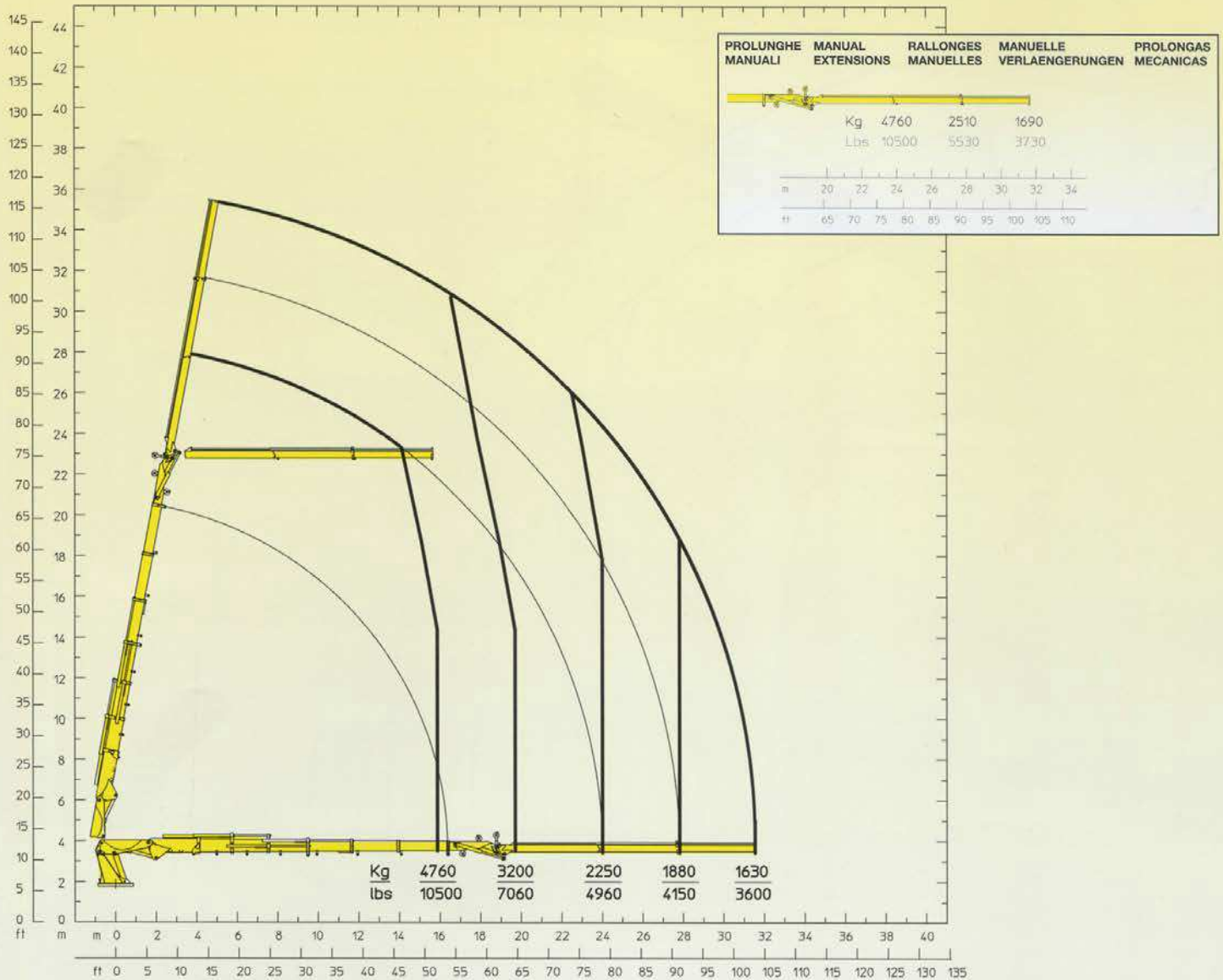
## OPTIONAL





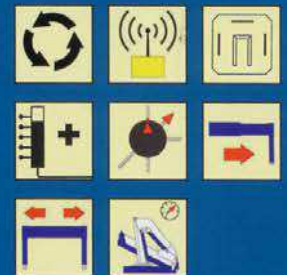
# 180000 E6JIB

# GORMAGH

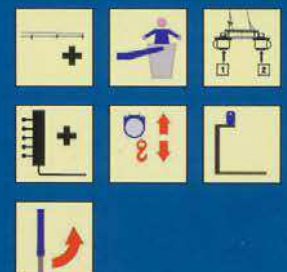


E6JIB	E6JIB	
171000 daN*m	1,237,082 Lb*ft	Momento statico massimo al perno torretta • Max. static moment at the turret pin Moment statique max. a l'axe de la tourelle • Max. statisches ubmoment am kranseulenbolzen
31.61 m	38'2"	Sbraccio idraulico • Hydraulic boom length Longueur du bras hydraulique • Hydraulic reichweite
39,91 m	130'11"	Sbraccio con prolunghe manuali • Boom length with manual extensions Longueur du bras avec rallonges manuelles
11000 daN*m	79,578 Lb*ft	Coppia di rotazione • Slew torque • Moment de rotation • Drehmoment
90 sec 360°	90 sec 360°	Tempo di rotazione • Slewing speed • Temp de rotation • Schwenkgeschwindigkeit
4,92+4,92 m	16'2"+16'2"	Uscita stabilizzatori (*) • Outriggers extensions (*) Sortie des bequilles (*) • Breite der abstützung (*)
12107 m	39'9"	Larghezza stabilizzatori (**) • Outriggers width (**) Largeur des bequilles (**) • Breite der abstützung (**)
		Lunghezza • Length • Longueur • Länge
		Larghezza • Width • Largeur • Breite
		Altezza • Height • Hauteur • Höhe
19790 kg	43,629 lbs	Peso (senza olio e montaggio) • Weight (without oil and fitting) Poids (sans huile et montage) • Gewicht (ohne öl und ohne)
115 l/min	30 us gal/min	Portata pompa (***) • Pump delivery (***) • Capacité de la pompe (***) • Pumpenheistung (***)
300 bar	4266 psi	Pressione • Pressure • Pression • Druck
450 l	119 us gal	Capacità serbatoio olio • Oil tank capacity • Capacité de reservoir d'huile • Öl tank inhalt

## STANDARD

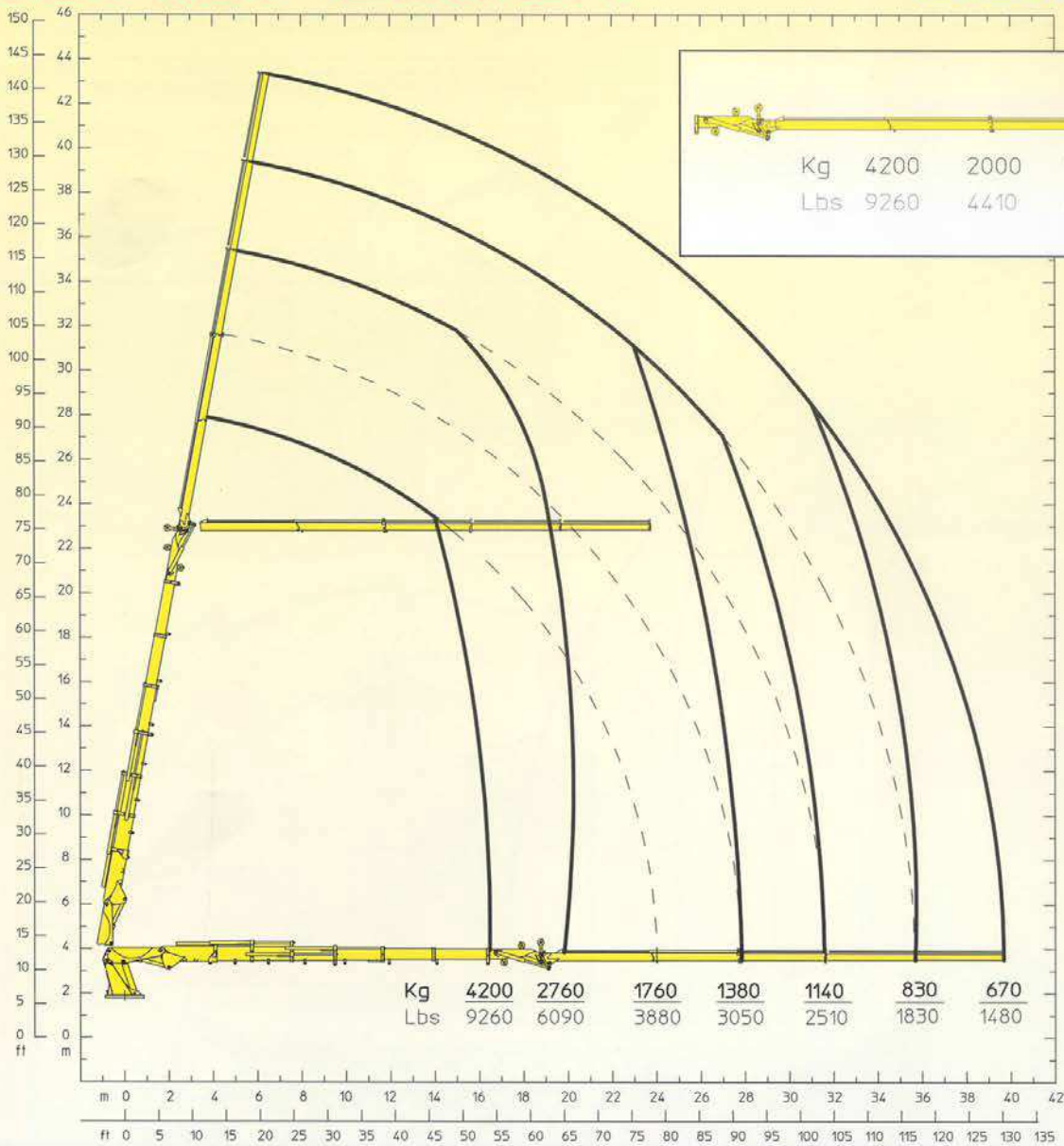


## OPTIONAL



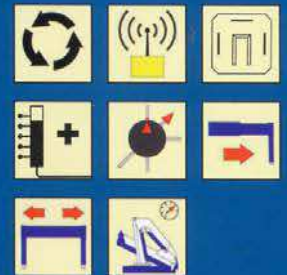


# 180000 E6JIB4

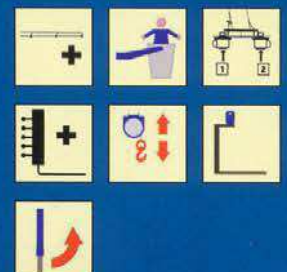


E6JIB4	E6JIB4	
171000 daN*m	1,237,082 Lb*ft	Momento statico massimo al perno torretta • Max. static moment at the turret pin Moment statique max. a l'axe de la tourelle • Max. statisches ubmoment am kran-saulenbolzen
39.56 m	38'2"	Sbraccio idraulico • Hydraulic boom length Longueur du bras hydraulique • Hydraulic reichweite
		Sbraccio con prolunghe manuali • Boom length with manual extensions Longueur du bras avec rallonges manuelles
11000 daN*m	79,578 Lb*ft	Coppia di rotazione • Slew torque • Moment de rotation • Drehmoment
90 sec 360°	90 sec 360°	Tempo di rotazione • Slewing speed • Temp de rotation • Schwenkgeschwindigkeit
4,92+4,92 m	16'2"+16'2"	Uscita stabilizzatori (*) • Outriggers extensions (*) Sortie des bequilles (*) • Breite der abstützung (*)
12107 m	39'9"	Larghezza stabilizzatori (***) • Outriggers width (***) Largeur des bequilles (***) • Breite der abstützung (***)
		Lunghezza • Length • Longeur • Länge
		Larghezza • Width • Largeur • Breite
		Altezza • Height • Huteur • Höhe
20230 kg	44,600 lbs	Peso (senza olio e montaggio) • Weight (without oil and fitting) Poids (sans huile et montage) • Gewicht (ohne öl und ohne)
115 l/min	30 us gal/min	Portata pompa (***) • Pump delivery (***) • Capacité de la pompe (***) • Pumpenleistung (***)
300 bar	4266 psi	Pressione • Pressure • Pression • Druck
450 l	119 us gal	Capacità serbatoio olio • Oil tank capacity • Capacité de reservoir d'huile • Öl tank inhalt

## STANDARD

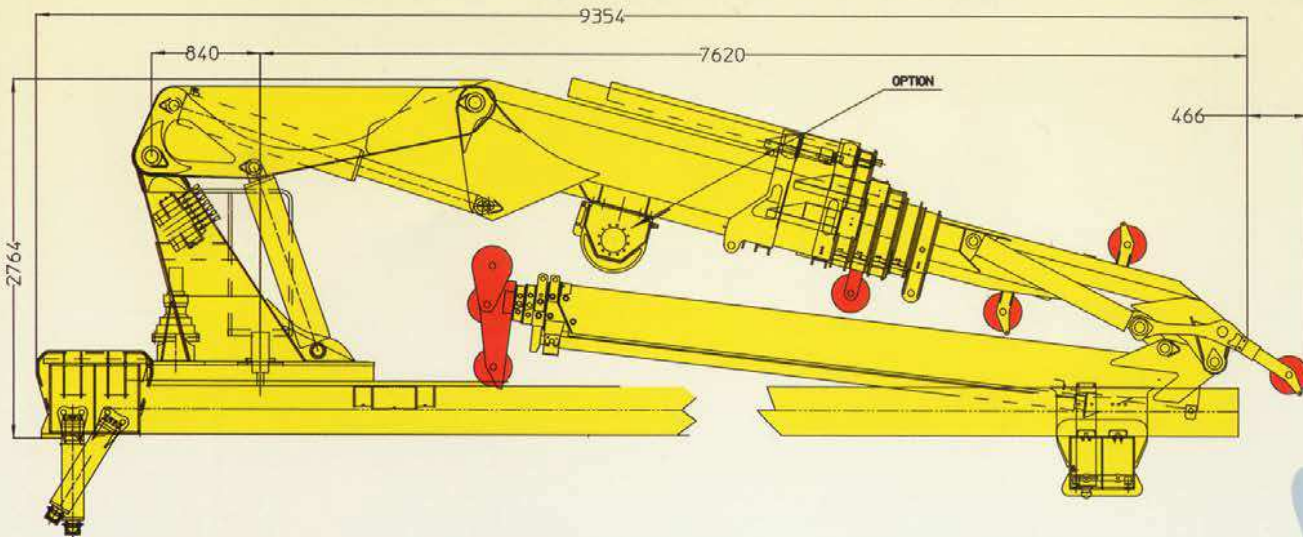
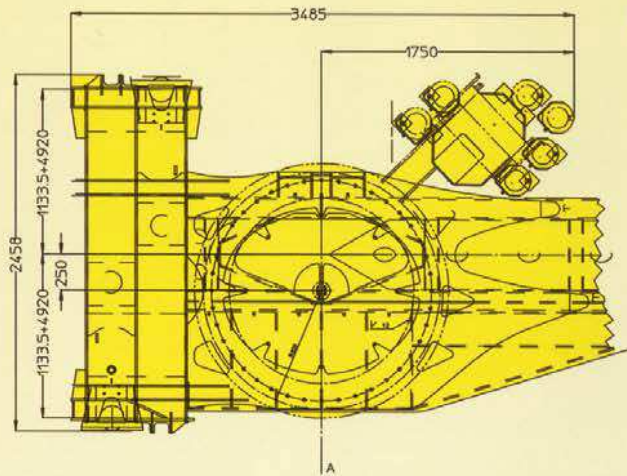
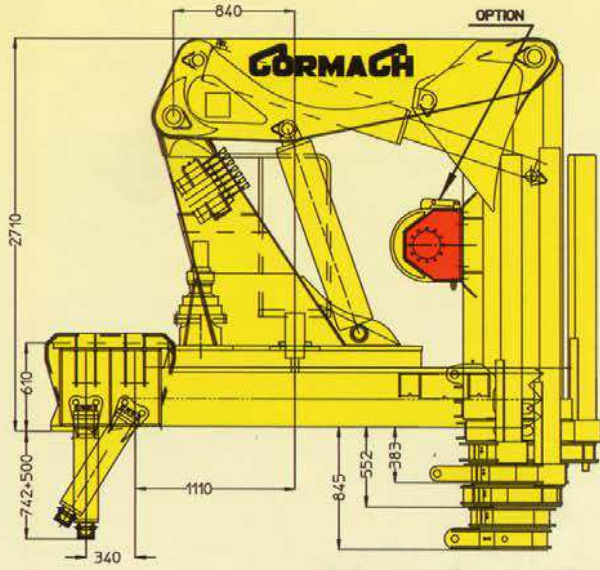


## OPTIONAL





# 180000 E



## STANDARD



Rotazione continua  
Continuous rotation  
Rotation continue  
Endlos schwenkwerk



Comando supplementare non attivato  
Additional free section not activated  
Section du distributeur pas activée  
Zusätzlicher steuerschieber



Traversa ausiliaria estendibile  
Additional outriggers with lateral extension  
Stabilisateurs supplémentaires avec élargissement  
Ausfahrbare zusätzl-stützen



Radiocomando  
Radio remote control  
Radiocommandes  
Funkfernsteuerung



Pompa a portata variabile  
Pump with load sensing  
Pompe à débit variable  
Verstellpumpe load sensing



Limitatore di momento  
Load limiting device  
Limiteur de charge  
Überlastabschaltung



Piastre maggiorate  
Large ground plates  
Plaques stabilisateurs  
Bodenplatten



Stabilizzatori gru base estendibili idraulicamente  
Outriggers with hydraulic extension  
Stabilisateurs avec élargissement hydraulique  
Hydraulisch Ausfahrbare stützen

## OPTIONAL



Prolunghe meccaniche  
Manual extensions  
Rallonges manuelles  
Manuelle verlängerungen



Cestello  
Basket  
Nacelle  
Personenkorb



Comando supplementare attivato  
Additional function  
section du distributeur activée  
Zusatzfunktion



Verricello  
Winch  
Tréuil  
Seilwinde



Doppio gruppo di rotazione  
Double rotation group  
Groupe de rotation double  
Doppelte drehgruppe



Utilizzo con attrezzo  
Additional accessories  
Utilisation avec accessoire  
Zubehör



Stabilizzatori gru base girevoli  
Tilt up outriggers  
Bequilles tournants  
Drehbare stützen

GORMAGH





CORMACH

# CORMACH

Cormach s.r.l. - Via Madonnina, 27 - C.P. 199 - 25018 MONTICHIARI (BS) - ITALY  
 Tel. 0039.030.9656811 - Telefax 0039.030.9656846.7.8  
 E-mail: info@cormach.com - www.cormach.com

A fronte di una continua ricerca tecnologica i dati possono cambiare senza preavviso. Contattare il nostro Ufficio Commerciale per ulteriori informazioni.  
 Because of continuous technology research data can change without notice. Please, contact our Commercial Dept. for further information.  
 A cause de une continue recherche technologique les données peuvent changer sans préavis. Contacter notre Bureau Commercial pour des autres informations.  
 Irrtum und technische Änderung vorbehalten masse und gewichte unverbindlich. Unser Vertrieb erteilt Ihnen gerne weitere Auskünfte. Bitte rufen Sie uns an.  
 Debido a los continuos avances tecnológicos los datos pueden variar sin notificación previa. Para más información rogamos contacten nuestro Departamento Comercial.