

CORMACH



575000

AXO E



עותמאן חסן ובניו בע"מ
052 5601111

www.cormach.com

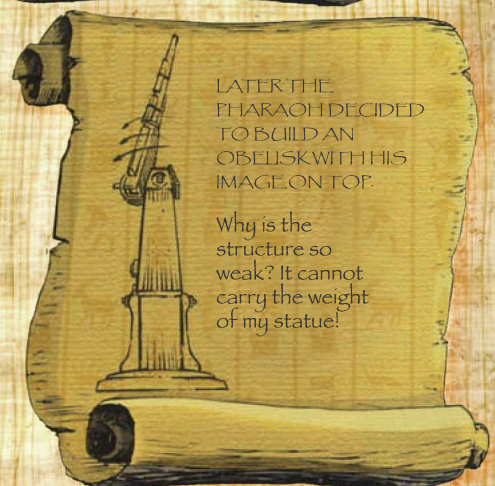
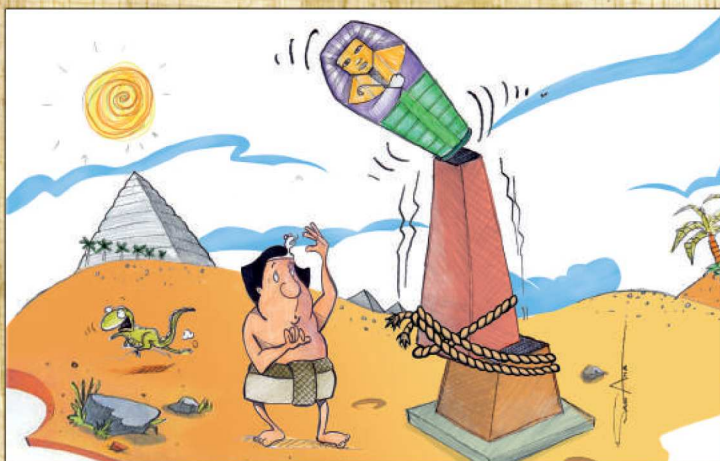
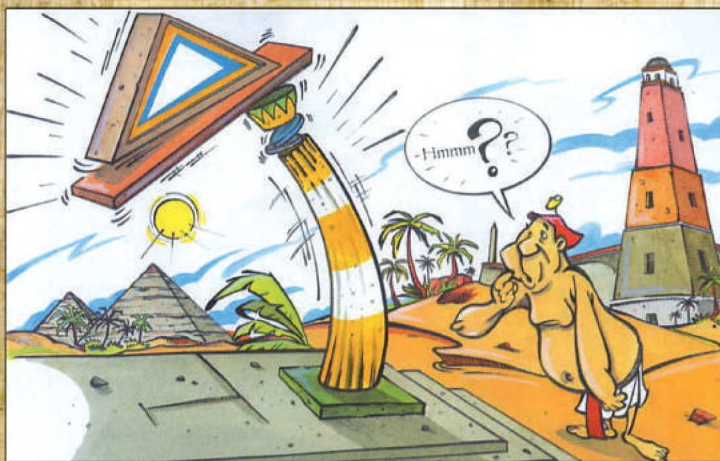
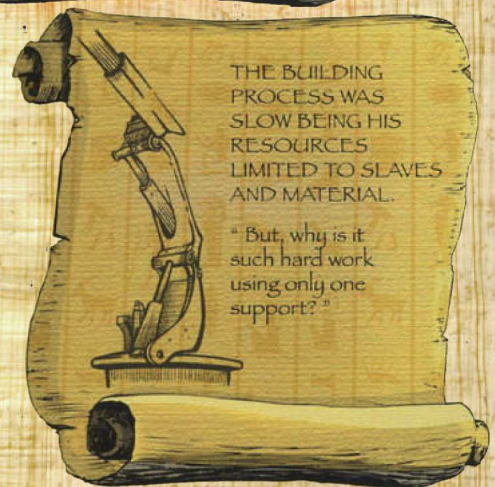
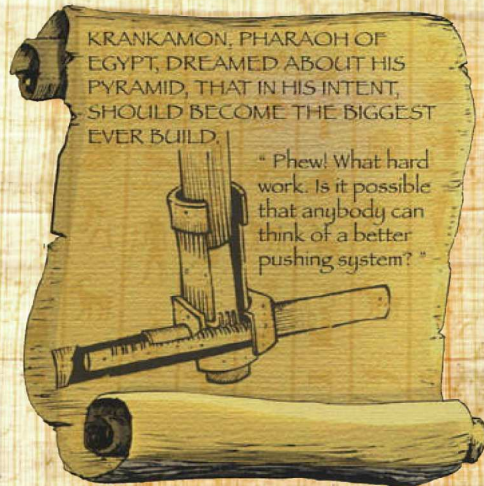
GORMACH

575000A **XO** E

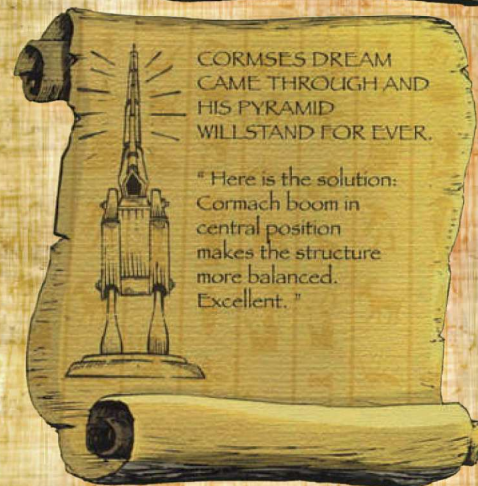
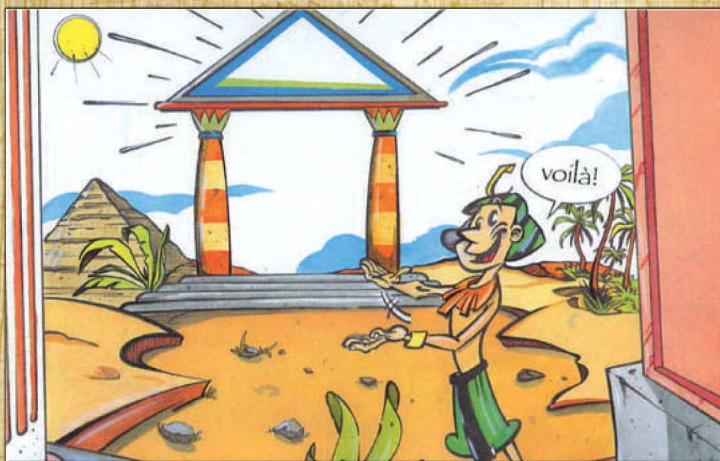
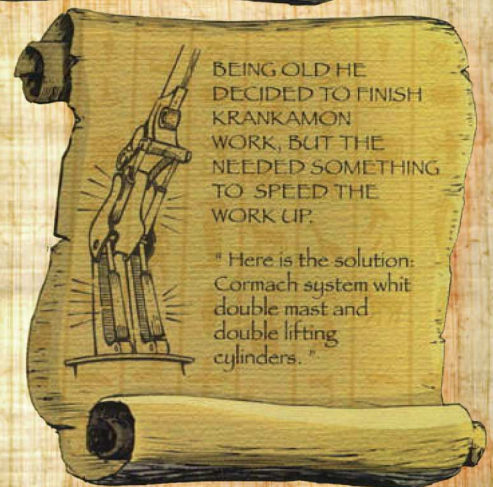
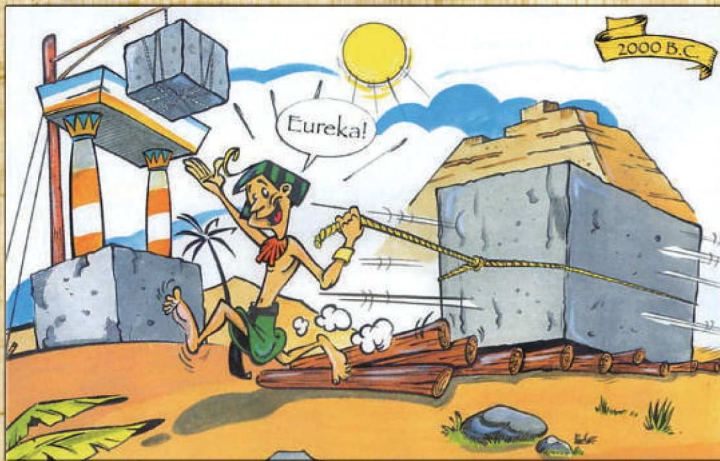




... ABOUT ANCIENT



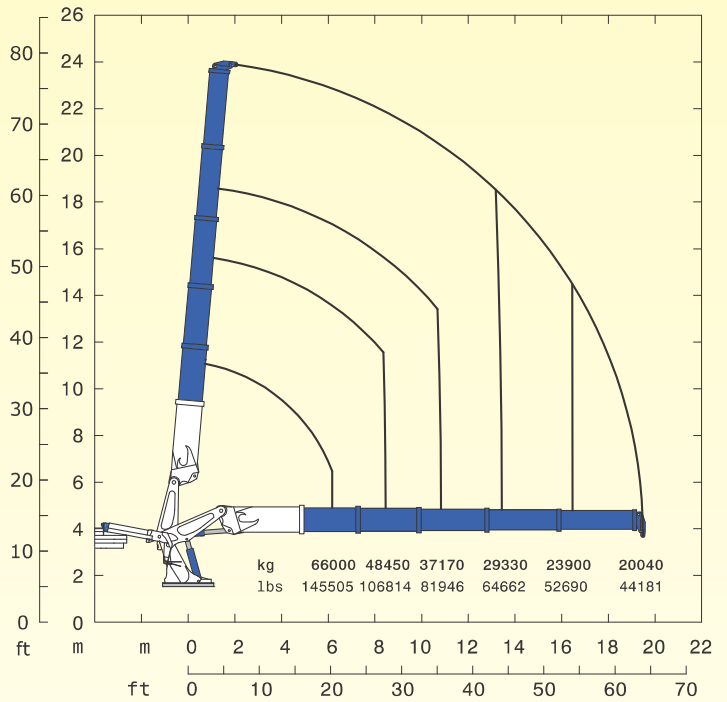
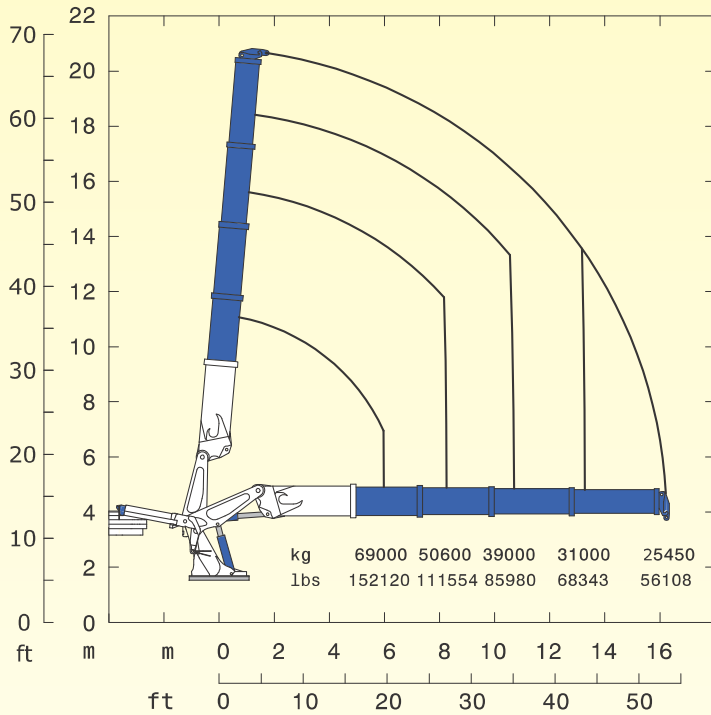
EGYPT MANUSCRIPTS



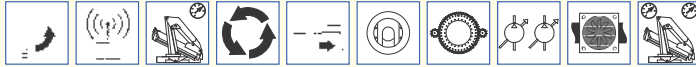
575000A χ O E

575000A χ O E4

575000A χ O E5



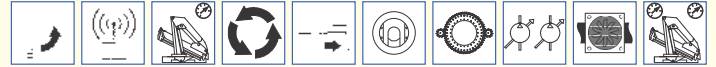
STANDARD



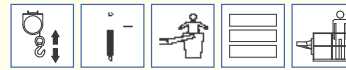
OPTIONAL



STANDARD



OPTIONAL



NOTA: Le portate delle versioni E4, E5, E6, ed E7 valgono solo per gru senza predisposizione per il JIB.

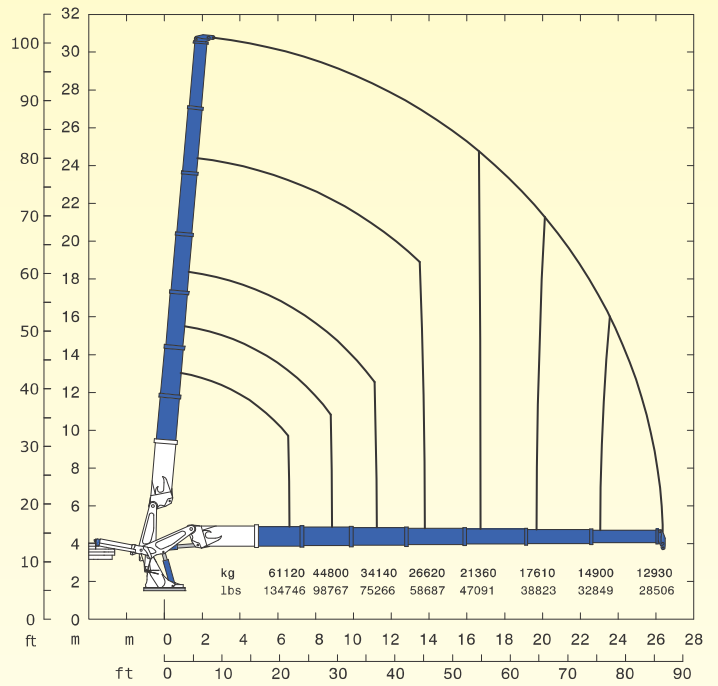
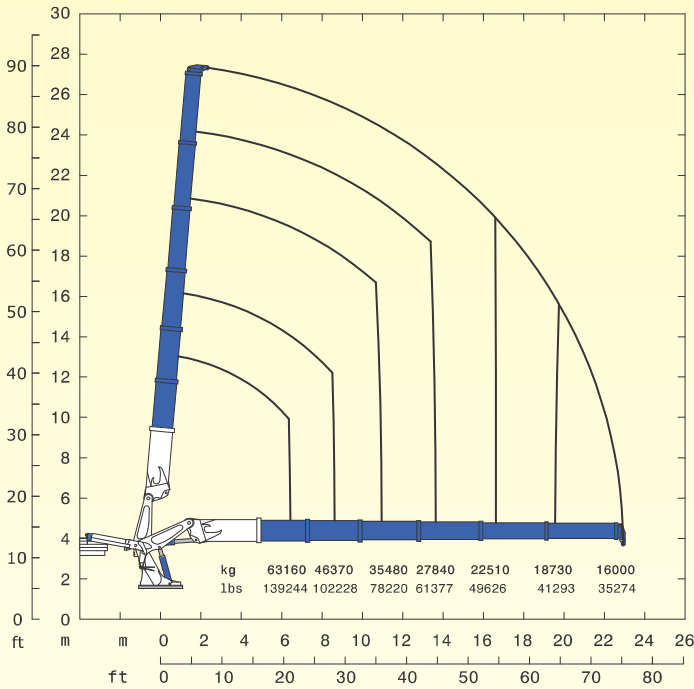
NOTE: The lifting capacities of the versione E4,E5,E6 and E7 are valid only for cranes without JIB predisposal.

NOTE: Les capacités de levage des versions E4, E5, E6 et E7 sont valables seulement pour grues sans predisposition JIB.

E4	E4		E5	E5
515000 daN*m	3725715 Lb*ft	Momento statico massimo al perno torretta • Max. static moment at the turret pin Moment statique max. a l'axe de la tourelle • Max. statisches ubmoment am kransaulenbolzen	515000 daN*m	3725715 Lb*ft
16.14 m	52' 11"	Sbraccio idraulico • Hydraulic boom length Longueur du bras hydraulique • Hydraulic reichweite	19.38 m	63' 7"
		Sbraccio con prolungha manuali • Bomm length with manual extensions Longueur du bras avec rallonges manuelles		
33270 daN*m	240688 Lb*ft	Coppia di rotazione • Slew torque • Moment de rotation • Drehmoment	33270 daN*m	240688 Lb*ft
73 s 360°	73 s 360°	Tempo di rotazione • Slewing speed • Temp de rotation • Schwenkgeschwindigkeit	73 s 360°	73 s 360°
3150+3150 mm 5200+5200 mm	10' 4" + 10' 4" 17' 1" + 17' 1"	Uscita stabilizzatori • Outriggers extensions Sortie des bequilles • Breite der abstützung	3150+3150 mm 5200+5200 mm	10' 4" + 10' 4" 17' 1" + 17' 1"
12340 mm	40' 6"	Larghezza stabilizzatori • Outriggers width Largeur des bequilles • Breite der abstützung	12340 mm	40' 6"
10530 mm	34' 7"	Lunghezza • Length • Longueur • Länge	10530 mm	34' 7"
2548 mm	8' 4"	Larghezza • Width • Largeur • Breite	2548 mm	8' 4"
2880 mm	9' 5"	Altezza • Height • Hauteur • Höhe	2880 mm	9' 5"
39590 kg	87281 lbs	Peso (senza olio e montaggio) • Weight (without oil and fitting) Poids (sans huile et montage) • Gewicht (ohne öl und ohne)	40980 kg	90345 lbs
120+110 l/min	31+29 us gal/min	Portata pompa (*) • Pump delivery (*) • Capacité de la pompe (*) • Pumpenheistung (*)	120+110 l/min	31+29 us gal/min
330 bar	4692 psi	Pressione • Pressure • Pression • Druck	330 bar	4692 psi
1250 l	330 us gal	Capacità serbatoio olio • Oil tank capacity • Capacité de reservoir d'huile • Öl tank inhalt	1250 l	330 us gal

575000AXO E6

575000AXO E7



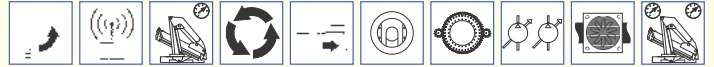
STANDARD



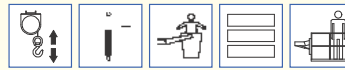
OPTIONAL



STANDARD



OPTIONAL

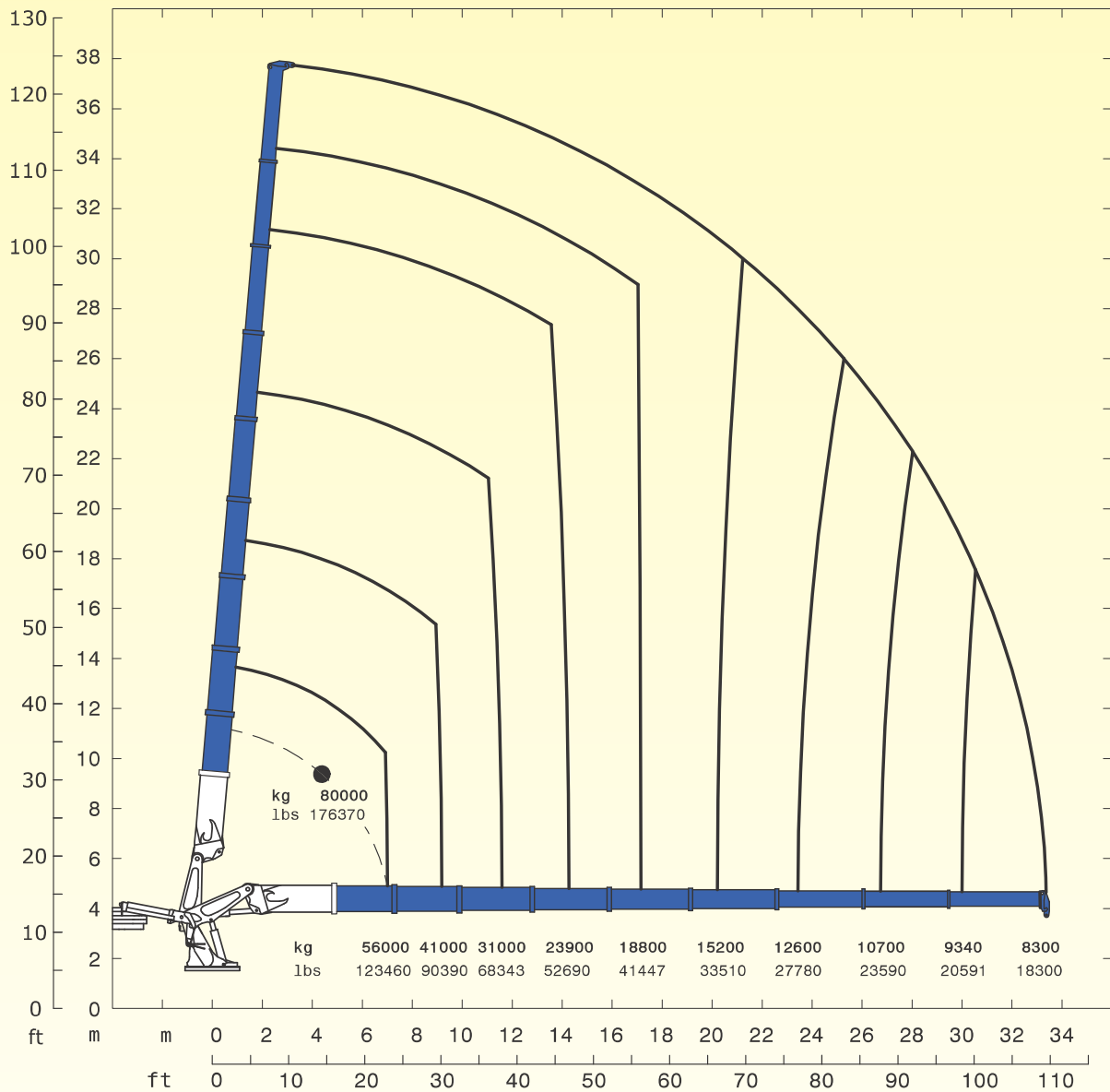


NOTA: Le portate delle versioni E4, E5, E6, ed E7 valgono solo per gru senza predisposizione per il JIB.

NOTE: The lifting capacities of the version E4,E5,E6 and E7 are valid only for cranes without JIB predisposal.

NOTE: Les capacités de levage des versions E4, E5, E6 et E7 sont valables seulement pour grues sans predisposition JIB.

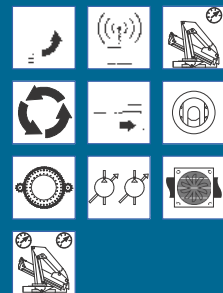
E6	E6		E7	E7
515000 daN*m	3725715 Lb*ft	Momento statico massimo al perno torretta • Max. static moment at the turret pin Moment statique max. a l'axe de la tourelle • Max. statisches ubmoment am kransaulenbolzen	515000 daN*m	3725715 Lb*ft
22.84 m	74' 11"	Sbraccio idraulico • Hydraulic boom length Longueur du bras hydraulique • Hydraulic reichweite	26.30 m	86' 3"
		Sbraccio con prolunghie manuali • Bomm length with manual extensions Longueur du bras avec rallonges manuelles		
33270 daN*m	240688 Lb*ft	Coppia di rotazione • Slew torque • Moment de rotation • Drehmoment	33270 daN*m	240688 Lb*ft
73 s 360°	73 s 360°	Tempo di rotazione • Slewing speed • Temp de rotation • Schwenkgeschwindigkeit	73 s 360°	73 s 360°
3150+3150 mm 5200+5200 mm	10' 4" + 10' 4" 17' 1" + 17' 1"	Uscita stabilizzatori • Outriggers extensions Sortie des bequilles • Breite der abstützung	3150+3150 mm 5200+5200 mm	10' 4" + 10' 4" 17' 1" + 17' 1"
12340 mm	40' 6"	Larghezza stabilizzatori • Outriggers width Largeur des bequilles • Breite der abstützung	12340 mm	40' 6"
10530 mm	34' 7"	Lunghezza • Length • Longueur • Länge	10530 mm	34' 7"
2548 mm	8' 4"	Larghezza • Width • Largeur • Breite	2548 mm	8' 4"
2880 mm	9' 5"	Altezza • Height • Hauteur • Höhe	2880 mm	9' 5"
42280 kg	93211 lbs	Peso (senza olio e montaggio) • Weight (without oil and fitting) Poids (sans huile et montage) • Gewicht (ohne öl und ohne)	43360 kg	95592 lbs
120+110 l/min	31+29 us gal/min	Portata pompa (*) • Pump delivery (*) • Capacité de la pompe (*) • Pumpenleistung (*)	120+110 l/min	31+29 us gal/min
330 bar	4692 psi	Pressione • Pressure • Pression • Druck	330 bar	4692 psi
1250 l	330 us gal	Capacità serbatoio olio • Oil tank capacity • Capacité de reservoir d'huile • Öl tank inhalt	1250 l	330 us gal



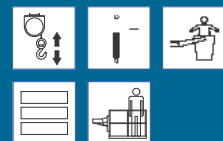
575000AXO E9

E9	E9	
515000 daN*m	3725715 Lb*ft	Momento statico massimo al perno torretta • Max. static moment at the turret pin Moment statique max. a l'axe de la tourelle • Max. statisches ubmoment am kranseulenbolzen
33.45 m	109' 9"	Sbraccio idraulico • Hydraulic boom length Longueur du bras hydraulique • Hydraulic reichweite
		Sbraccio con prolungha manuali • Bomm length with manual extensions Longueur du bras avec rallonges manuelles
33270 daN*m	240688 Lb*ft	Coppia di rotazione • Slew torque • Moment de rotation • Drehmoment
73 s 360°	73 s 360°	Tempo di rotazione • Slewing speed • Temp de rotation • Schwenkgeschwindigkeit
3150+3150 mm 5200+5200 mm	10' 4" + 10' 4" 17' 1" + 17' 1"	Uscita stabilizzatori • Outriggers extensions Sortie des bequilles • Breite der abstützung
12340 mm	40' 6"	Larghezza stabilizzatori • Outriggers width Largeur des bequilles • Breite der abstützung
10530 mm	34' 7"	Lunghezza • Length • Longueur • Länge
2548 mm	8' 4"	Larghezza • Width • Largeur • Breite
2880 mm	9' 5"	Altezza • Height • Hauteur • Höhe
45300 kg	99869 lbs	Peso (senza olio e montaggio) • Weight (without oil and fitting) Poids (sans huile et montage) • Gewicht (ohne öl und ohne)
120+110 l/min	31+29 us gal/min	Portata pompa (*) • Pump delivery (*) • Capacité de la pompe (*) • Pumpenheistung (*)
330 bar	4692 psi	Pressione • Pressure • Pression • Druck
1250 l	330 us gal	Capacità serbatoio olio • Oil tank capacity • Capacité de reservoir d'huile • Öl tank inhalt

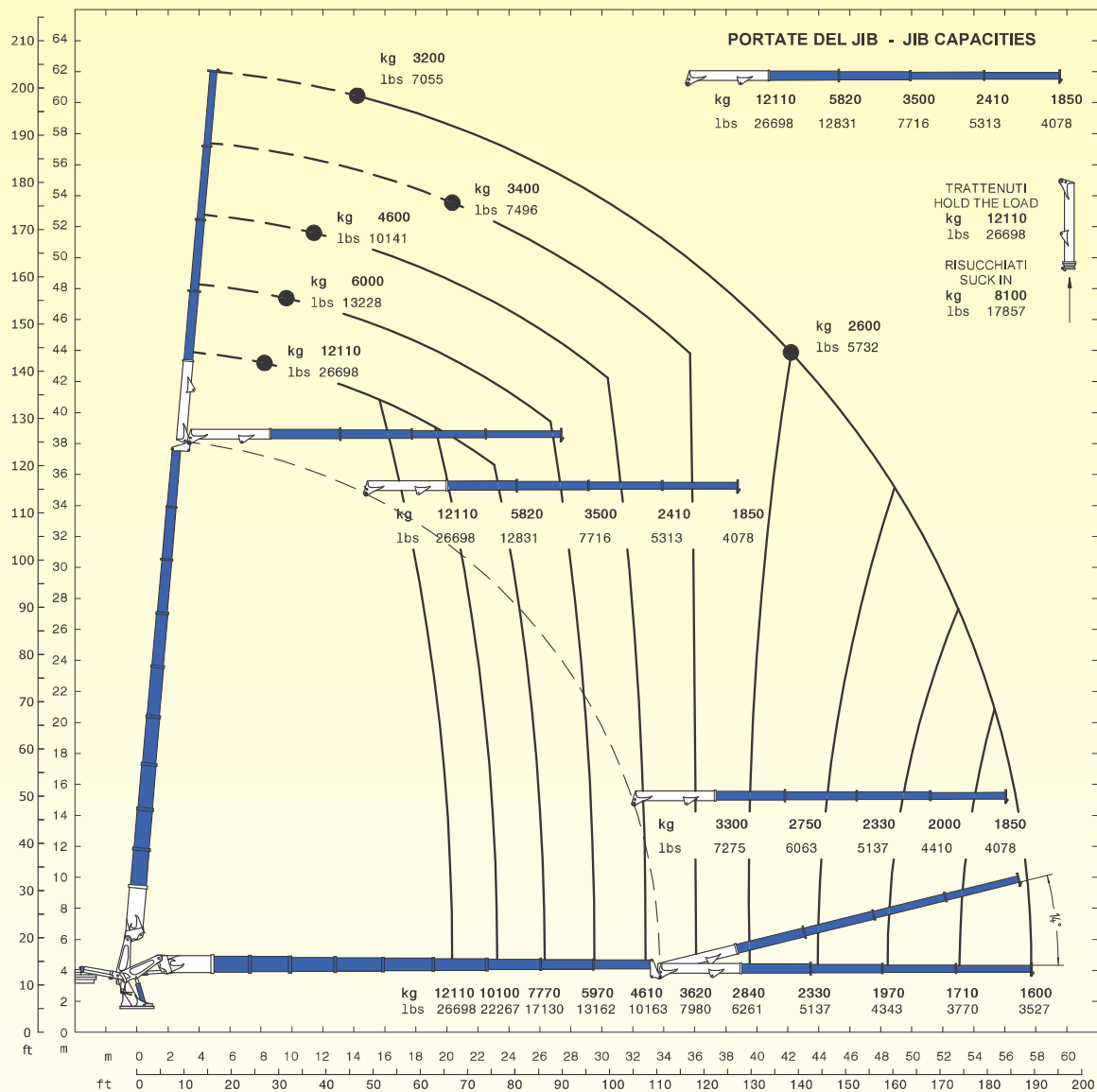
STANDARD



OPTIONAL



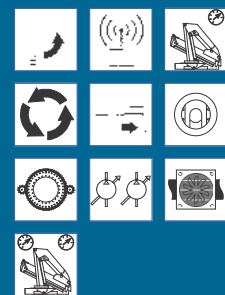
(*) Consigliata, (*) Recommended, (*) Reconnandé, (*) Empfohlen.



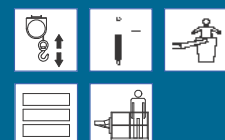
575000A^{XO} E9J804

E9J804	E9J804	
515000 daN*m	3725715 Lb*ft	Momento statico massimo al perno torretta • Max. static moment at the turret pin Moment statique max. a l'axe de la tourelle • Max. statisches ubmoment am kransaulenbolzen
57.84 m	189' 9"	Sbraccio idraulico • Hydraulic boom length Longueur du bras hydraulique • Hydraulic reichweite
		Sbraccio con prolunghe manuali • Bomm length with manual extensions Longueur du bras avec rallonges manuelles
33270 daN*m	240688 Lb*ft	Coppia di rotazione • Slew torque • Moment de rotation • Drehmoment
73 s 360°	73 s 360°	Tempo di rotazione • Slewing speed • Temp de rotation • Schwenkgeschwindigkeit
3150+3150 mm 5200+5200 mm	10' 4" + 10' 4" 17' 1" + 17' 1"	Uscita stabilizzatori • Outriggers extensions Sortie des bequilles • Breite der abstützung
12340 mm	40' 6"	Larghezza stabilizzatori • Outriggers width Largueur des bequilles • Breite der abstützung
10530 mm	34' 7"	Lunghezza • Length • Longueur • Länge
2548 mm	8' 4"	Larghezza • Width • Largeur • Breite
2880 mm	9' 5"	Altezza • Height • Huteur • Höhe
50450 kg	111223 lbs	Peso (senza olio e montaggio) • Weight (without oil and fitting) Poids (sans huile et montage) • Gewicht (ohne öl und ohne)
120+110 l/min	31+29 us gal/min	Portata pompa (*) • Pump delivery (*) • Capacité de la pompe (*) • Pumpenheistung (*)
330 bar	4692 psi	Pressione • Pressure • Pression • Druck
1250 l	330 us gal	Capacità serbatoio olio • Oil tank capacity • Capacité de reservoir d'huile • Öl tank inhalt

STANDARD

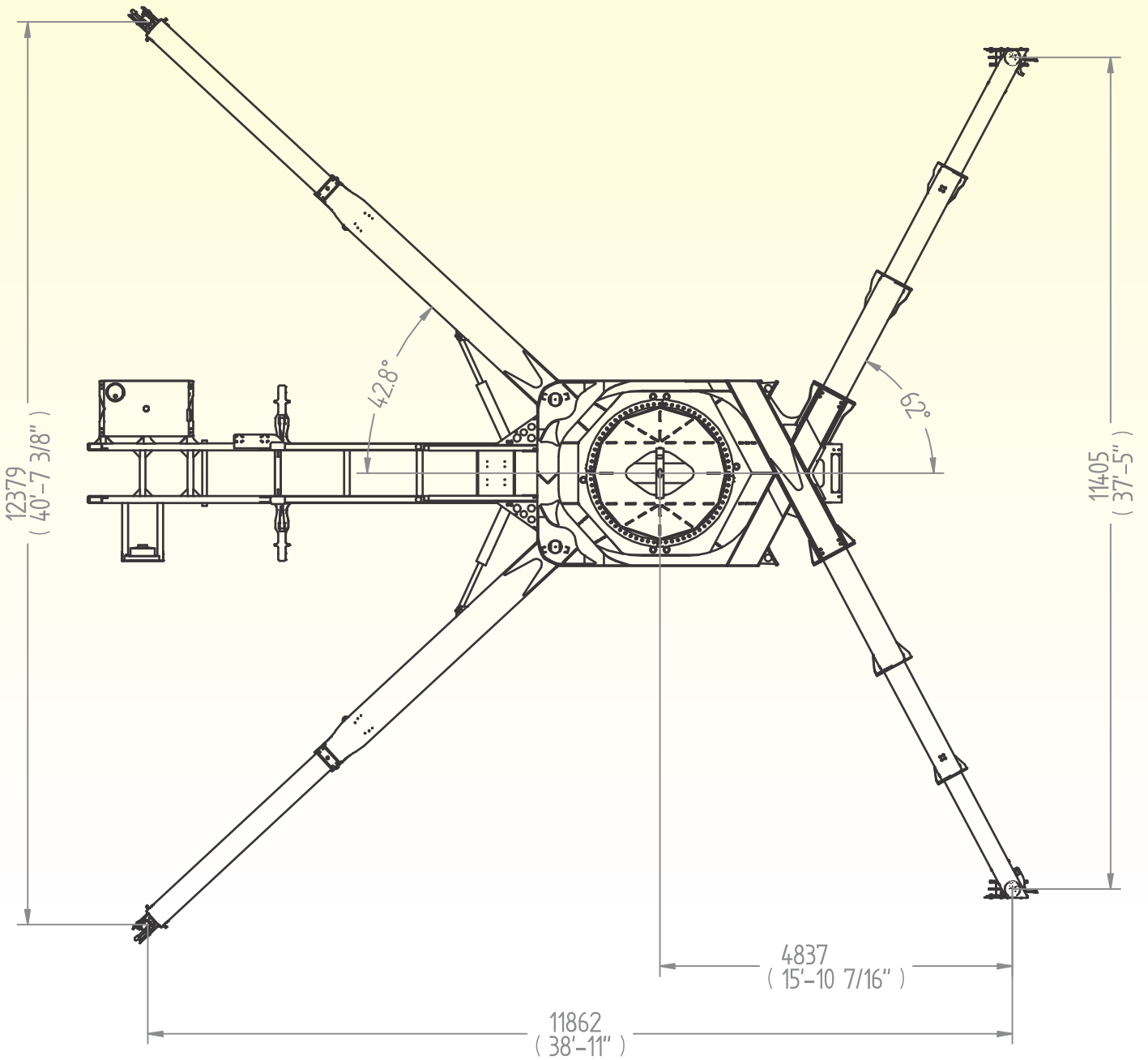
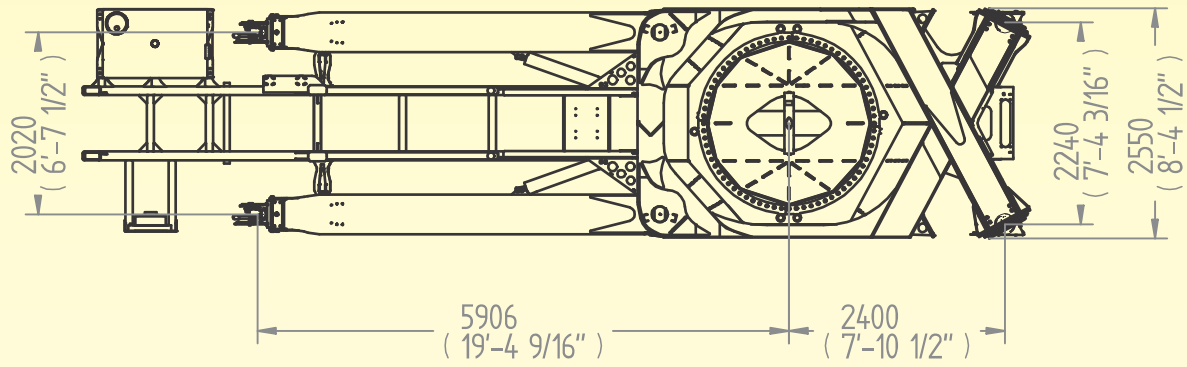


OPTIONAL



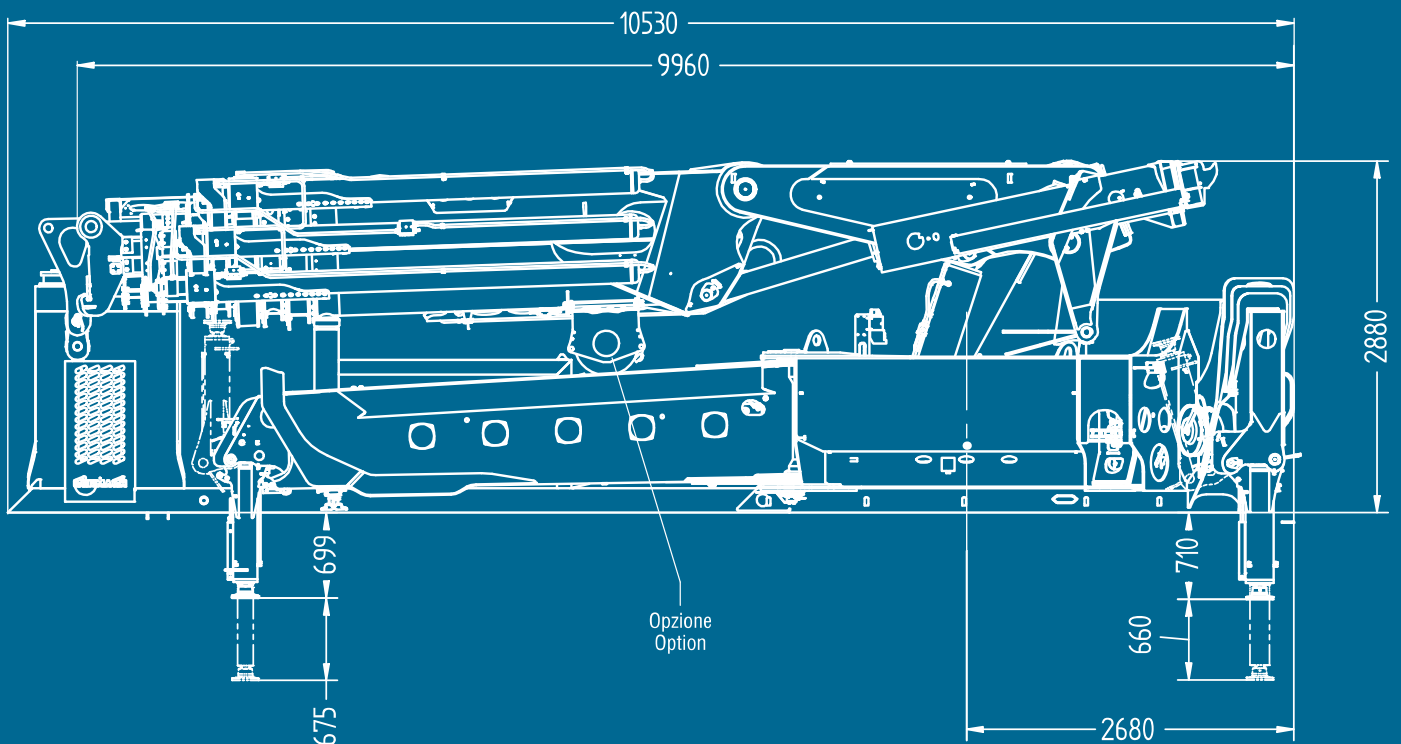
(*) Consigliata, (*) Recommended, (*) Reconnaté, (*) Empfohlen.

575000A **XO** E



E4		E5		E6		E7		E9		E9J804	
m	kg	m	kg	m	kg	m	kg	m	kg	m	kg
ft	lbs	ft	lbs	ft	lbs	ft	lbs	ft	lbs	ft	lbs
5.98	69000	6.16	66000	6.38	63160	6.53	61120	7.00	56000	20.35	12110
19'7"	152120	20'3"	145505	20'11"	139244	21'5"	134746	23'0"	123460	66'9"	26698
8.17	50600	8.35	48450	8.57	46370	8.72	44800	9.18	41000	23.24	10100
26'10"	111554	27'5"	106814	28'1"	102228	28'7"	98767	30'1"	90390	76'3"	22267
10.57	39000	10.75	37170	10.97	35480	11.12	34140	11.58	31000	26.30	7770
34'8"	85980	35'3"	81946	36'0"	78220	36'6"	75266	38'0"	68343	86'3"	17130
13.25	31000	13.43	29330	13.65	27840	13.80	26620	14.26	23900	29.53	5970
43'6"	68343	44'1"	64662	44'9"	61377	45'3"	58687	46'9"	52690	96'11"	13162
16.14	25450	16.32	23900	16.54	22510	16.70	21360	17.15	18800	32.83	4610
52'11"	56108	53'7"	52690	54'3"	49626	54'9"	47091	56'3"	41447	107'9"	10163
		19.38	20040	19.60	18730	19.75	17610	20.21	15200	36.07	3620
		63'7"	44181	64'4"	41293	64'10"	38823	66'4"	33510	118'4"	7980
				22.84	16000	23.00	14900	23.44	12600	39.54	2840
				74'11"	35274	75'6"	32849	76'11"	27780	129'9"	6261
						26.30	12930	26.74	10700	43.93	2330
						86'3"	28506	87'9"	23590	144'2"	5137
								30.00	9340	48.44	1970
								98'5"	20591	158'11"	4343
								33.45	8300	53.08	1710
								109'9"	18300	174'2"	3770
										57.84	1600
										198'9"	3527

575000A~~XO~~ E9



575000A~~XO~~ E

STANDARD



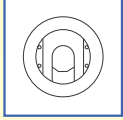
Limitatore di momento
Load limiting device
Limiteur de charge
Überlastabschaltungssystem



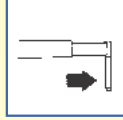
Rotazione continua
Continuous rotation
Rotation continue
Endlos schwenkwerk



Stabilizzatori gru base girevoli
Tilt up outriggers
Bequilles tournants
Drehbare stützen



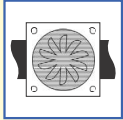
Piastre di appoggio maggiorate
Large ground plates
Plaques stabilisateurs
Bodenplatten



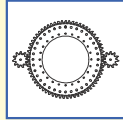
Stabilizzatori gru base estendibili idraulicamente
Outriggers with hydraulic
Stabilisateurs avec extension hydraulique
Hydraulisch ausfahrbare stützen



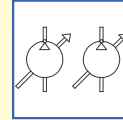
Radiocomando
Radio remote control
Radiocommandes
Funkfernsteuerung



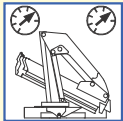
Scambiatore di calore
Oil cooler
Echangeur de chaleur
Ölkühler



Doppia rotazione
Double rotation
Rotation double
Umschiffer umdrehung

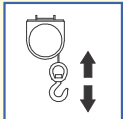


Doppia pompa a portata variabile
Double pump with load sensing
Double pompe à débit variable
Doppel verstellpumpe load sensing

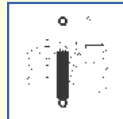


Doppio limitatore di momento
Double load limiting device
Double limiteur de charge
Doppel Überlastabschaltungssystem

OPTIONAL



Verricello
Winch
Treuil
Seilwinde



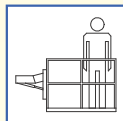
Trattamento marino della gru
Marine treatment of the crane
Traitement marine de la grue
Marine behandlung des kranes



Cestello
Basket
Nacelle
Personnenkorb

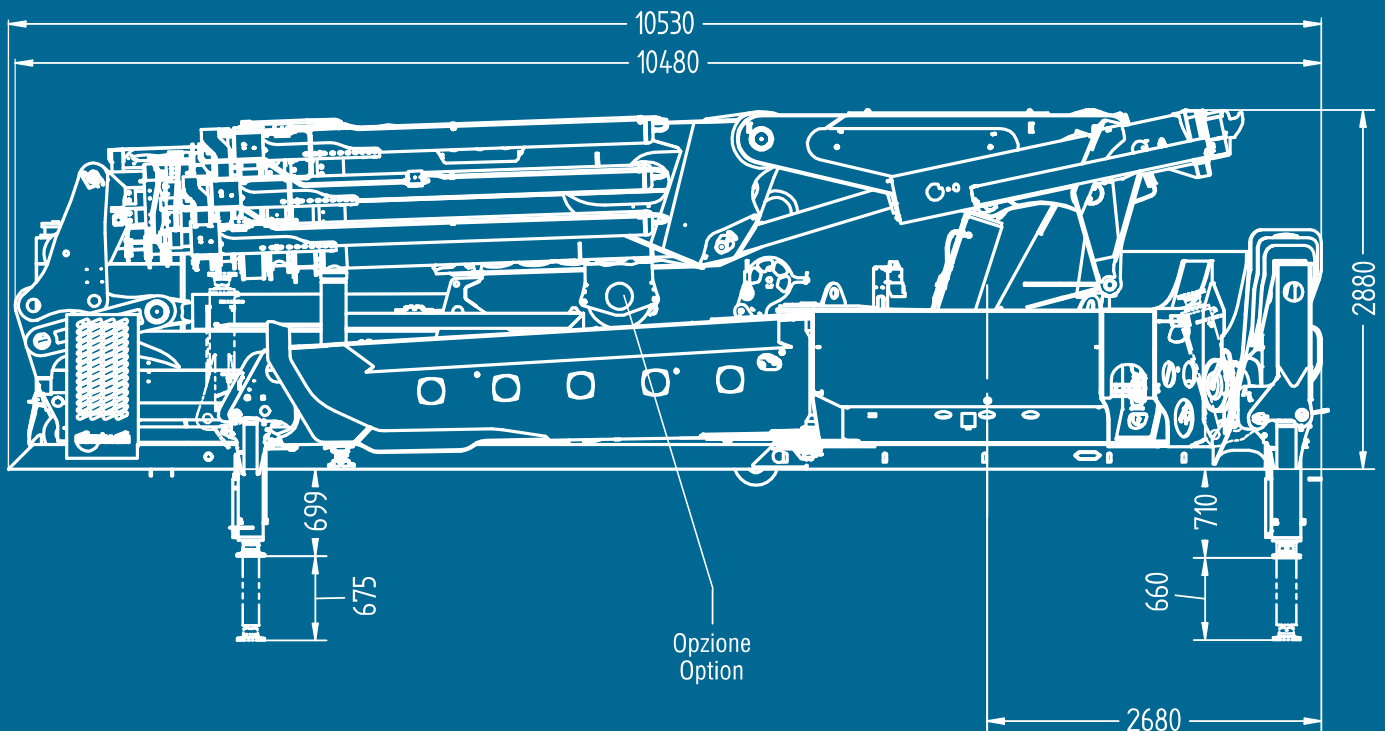


Zavorra
Counterweight
Lest
Ballast



Piattaforma autolivellante
Self leveling platform
Plateforme auto nivelante
Arbeitskorb mit automatische Ausgleich Anlage

575000A~~XO~~ E9J804



GORMAGH

575000AXO E



GORMAGH

575000A **XO** E



GORMACH

575000A X O E





CORMACH

Cormach s.r.l. - Via Madonnina, 27 - C.P. 199 - 25018 MONTICHIARI (BS) - ITALY
Tel. 0039.030.9656811 - Telefax 0039.030.9656846.7.8
E-mail: info@cormach.com - www.cormach.com

A fronte di una continua ricerca tecnologica i dati possono cambiare senza preavviso. Contattare il nostro Ufficio Commerciale per ulteriori informazioni.
Because of continuous technology research data can change without notice. Please, contact our Commercial Dept. for further information.
A cause de une continue recherche technologique les données peuvent changer sans preavis. Contacter notre Bureau Commercial pour des autres informations.
Irtum und technische Änderung vorbehalten masse und gewichte unverbindlich. Unser Vertrieb erteilt Ihnen gerne weitere Auskünfte. Bitte rufen Sie uns an.
Debito a los continuos avances tecnológicos los datos pueden variar sin notificación previa. Para más información rogamos contacten nuestro Departamento Comercial.