

CORMACH

8700 E



www.cormach.com



Radiocomando con distributore proporzionale (OPZIONE).
Radio remote control with proportional control bank (OPTIONAL).
 Radiocommande avec distributeur proportionnelle (OPTION).
Funkfernsteuerung mit proportional Steuerventil (auf Frage).



Comandi accessibili da terra. Tutti i carter in acciaio inox AISI 304.
Controls can be reached standing on the side. All the carters are in stainless steel AISI 304.
 Commandes accessibles de terre. Tous les carter sont en acier inox AISI 304.
Von der Seite steuerbar. schutzplatten in Edelstahl AISI 304.



Verricello (OPZIONE).
Winch (OPTIONAL).
 Treuil (OPTION).
Winde (Auf Frage).



8700 E



Scambiatore di calore (OPZIONE).
Heat exchanger (OPTIONAL).
Echangeur de chaleur (OPTION).
Ölkühler (auf Frage).



Cilindro stabilizzatore ribaltabile -50°.
-50 degrees tilting stabilising cylinder (OPTIONAL).
Cylindre stabilisateur escamotable -50 degrés.
Stützzyylinder kann -50° umgekippt werden.

... ABOUT ANCIENT



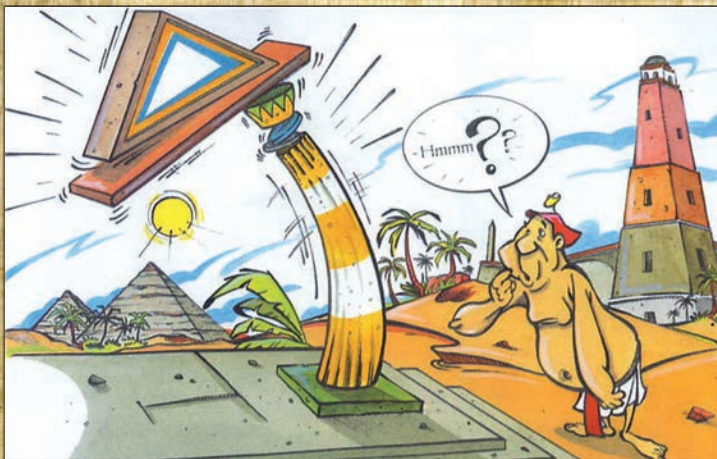
KRANKAMON, PHARAOH OF EGYPT, DREAMED ABOUT HIS PYRAMID, THAT IN HIS INTENT, SHOULD BECOME THE BIGGEST EVER BUILD.

"Phew! What hard work. Is it possible that anybody can think of a better pushing system?"



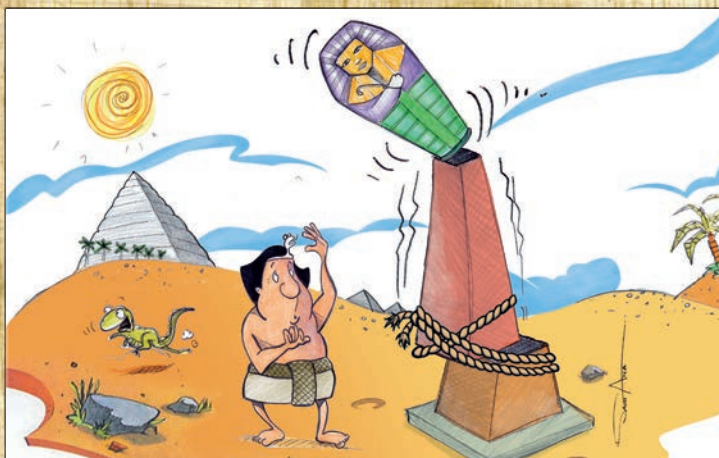
THE BUILDING PROCESS WAS SLOW BEING HIS RESOURCES LIMITED TO SLAVES AND MATERIAL.

"But, why is it such hard work using only one support?"



THE PHARAOH LIVED A SHORT AND HARD LIFE AND THE KRANKAMON PYRAMIDS REMAINED A DREAM.

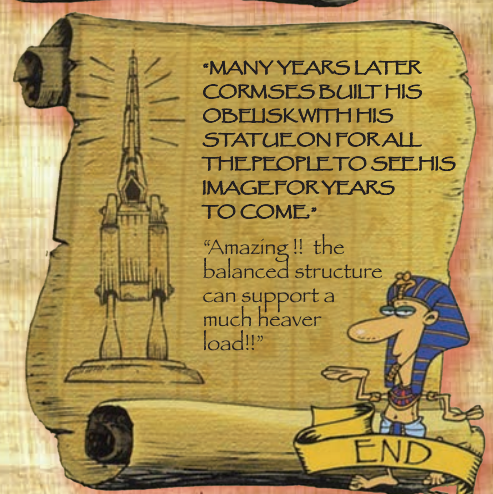
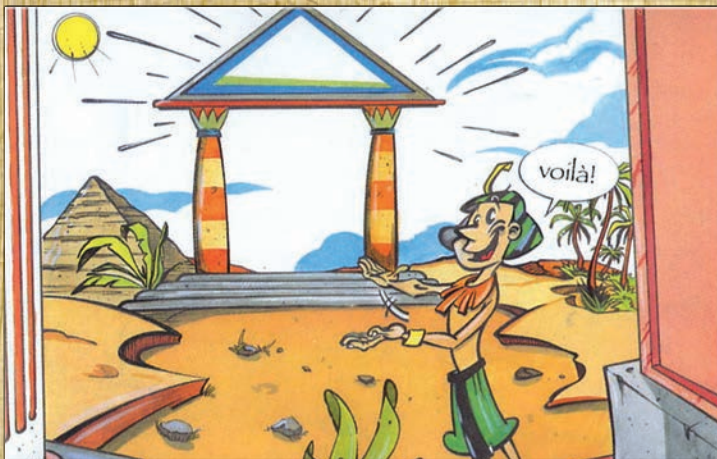
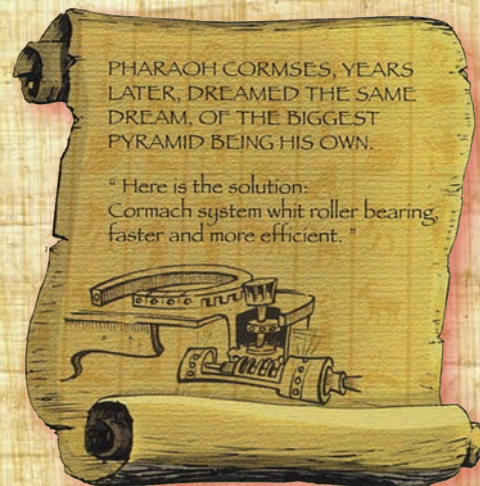
"There is something illogical in this system. The offset boom unbalances the structure."



LATER THE PHARAOH DECIDED TO BUILD AN OBELISK WITH HIS IMAGE ON TOP.

Why is the structure so weak? It cannot carry the weight of my statue!

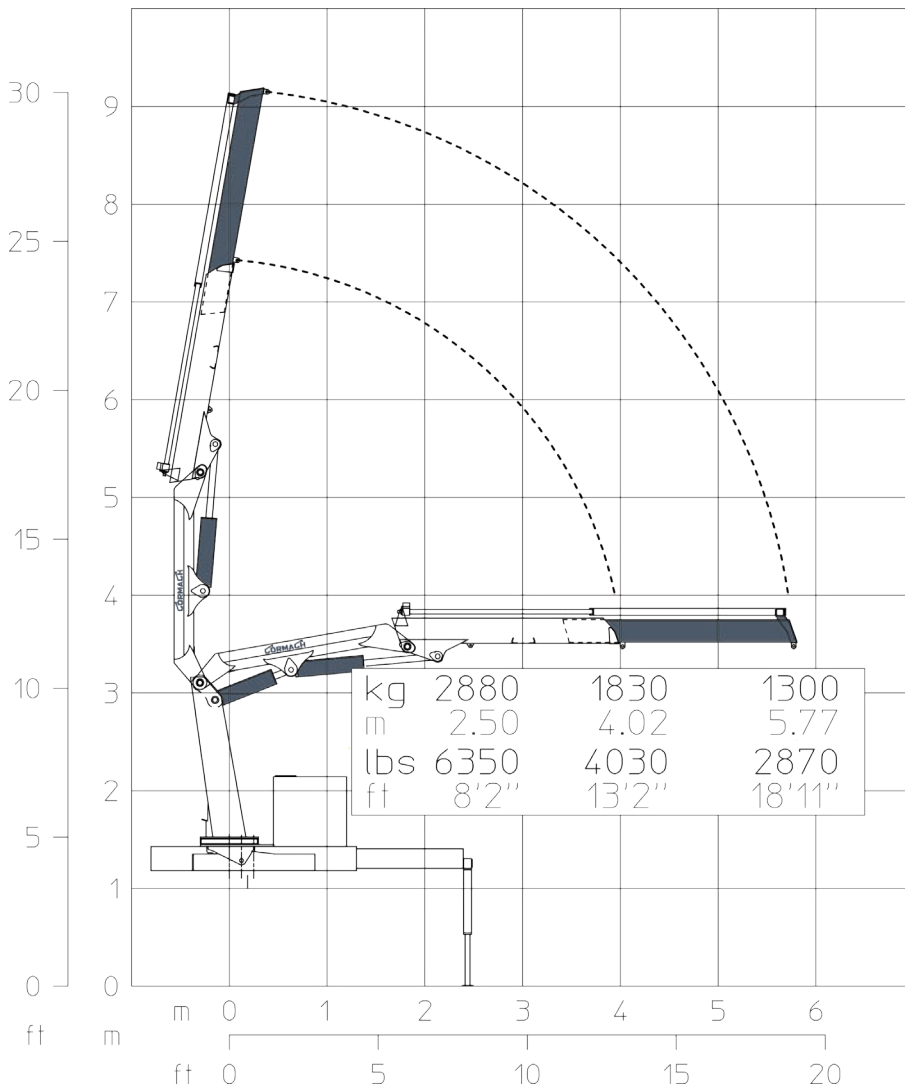
EGYPT MANUSCRIPTS



8700 E



8700 E1



E1	E1	
8730 daN*m	63156 Lb*ft	Momento statico massimo al perno torretta • Max. static moment at the turret pin Moment statique max. a l'axe de la tourelle • Max. statisches ubmoment am kran Saulenbolzen
5.77 m	18'11"	Sbraccio idraulico • Hydraulic boom length Longueur du bras hydraulique • Hydraulic reichweite
820 daN*m	5932 Lb*ft	Coppia di rotazione • Slew torque • Moment de rotation • Drehmoment
29 sec 360°	29 sec 360°	Tempo di rotazione • Slewing speed • Temp de rotation • Schwenkgeschwindigkeit
1200+1100mm	3'11"+3'7"	Uscita stabilizzatori (*) • Outriggers extensions (*) Sortie des bequilles (*) • Breite der abstützung (*)
4500 mm	14'9"	Larghezza stabilizzatori (**) • Outriggers width (**) Largeur des bequilles (**) • Breite der abstützung (**)
650+35 mm	2'2"+0'1"	Lunghezza • Length • Longueur • Länge
2300 mm	7'7"	Larghezza • Width • Largeur • Breite
2000 mm	6'7"	Altezza • Height • Hauteur • Höhe
1110 kg	2447 lbs	Peso (senza olio e montaggio) • Weight (without oil and fitting) Poids (sans huile et montage) • Gewicht (ohne öl und ohne)
18 l/min	5 us gal/min	Portata pompa (***) • Pump delivery (***) • Capacité de la pompe (***) • Pumpenheistung (***)
275 bar	3911 psi	Pressione • Pressure • Pression • Druck
50 l	13 us gal	Capacità serbatoio olio • Oil tank capacity • Capacité de reservoir d'huile • Öl tank inhalt

STANDARD

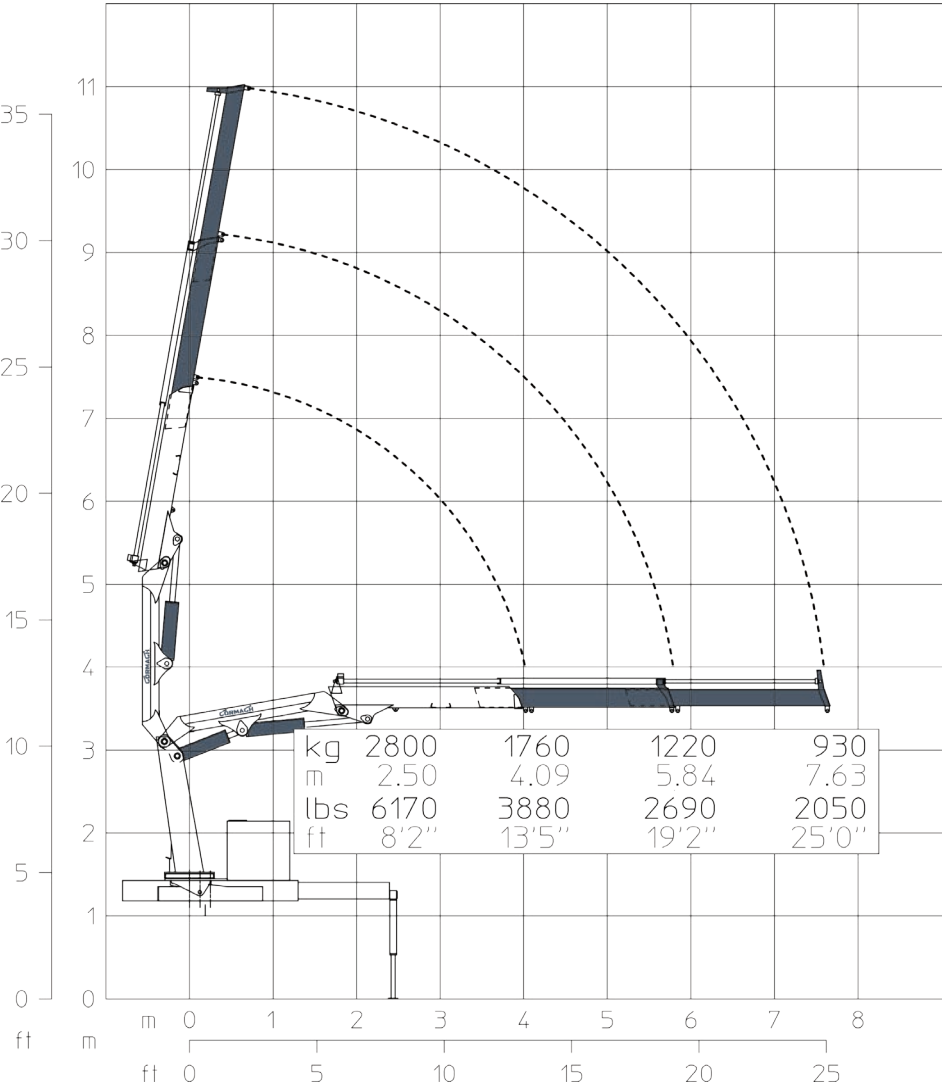


OPTIONAL



8700 E

8700 E2

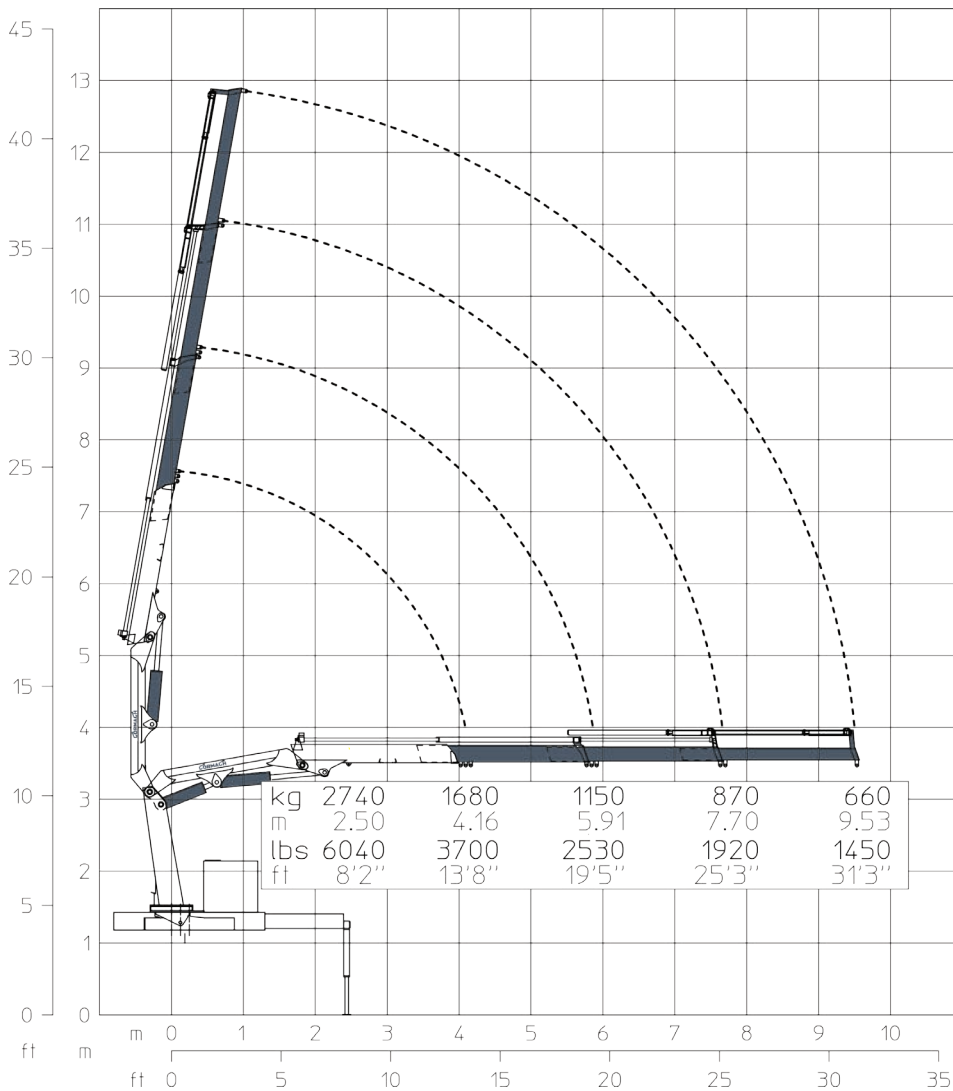


E2	E2	
8730 daN*m	63156 Lb*ft	Momento statico massimo al perno torretta • Max. static moment at the turret pin Moment statique max. a l'axe de la tourelle • Max. statisches ubmoment am kran Saulenbolzen
7.63 m	25'0"	Sbraccio idraulico • Hydraulic boom length Longueur du bras hydraulique • Hydraulic reichweite
820 daN*m	5932 Lb*ft	Coppia di rotazione • Slew torque • Moment de rotation • Drehmoment
29 sec 360°	29 sec 360°	Tempo di rotazione • Slewing speed • Temp de rotation • Schwenkgeschwindigkeit
1200+1100mm	3'11" + 3'7"	Uscita stabilizzatori (*) • Outriggers extensions (*) Sortie des bequilles (*) • Breite der abstützung (*)
4500 mm	14'9"	Larghezza stabilizzatori (**) • Outriggers width (**) Largeur des bequilles (**) • Breite der abstützung (**)
650+35 mm	2'2" + 0'1"	Lunghezza • Length • Longueur • Länge
2300 mm	7'7"	Larghezza • Width • Largeur • Breite
2000 mm	6'7"	Altezza • Heigth • Huteur • Höhe
1194 kg	2632 lbs	Peso (senza olio e montaggio) • Weight (without oil and fitting) Poids (sans huile et montage) • Gewicht (ohne öl und ohne)
18 l/min	5 us gal/min	Portata pompa (***) • Pump delivery (***) • Capacité de la pompe (***) • Pumpenheistung (***)
275 bar	3911 psi	Pressione • Pressure • Pression • Druck
50 l	13 us gal	Capacità serbatoio olio • Oil tank capacity • Capacité de reservoir d'huile • Öl tank inhalt

STANDARD

OPTIONAL

8700 E3



E3	E3	
8730 daN*m	63156 Lb*ft	Momento statico massimo al perno torretta • Max. static moment at the turret pin Moment statique max. a l'axe de la tourelle • Max. statisches ubmoment am kran Saulenbolzen
9.53 m	31'3"	Sbraccio idraulico • Hydraulic boom length Longueur du bras hydraulique • Hydraulic reichweite
820 daN*m	5932 Lb*ft	Coppia di rotazione • Slew torque • Moment de rotation • Drehmoment
29 sec 360°	29 sec 360°	Tempo di rotazione • Slewing speed • Temp de rotation • Schwenkgeschwindigkeit
1200+1100mm	3'11" + 3'7"	Uscita stabilizzatori (*) • Outriggers extensions (*) Sortie des bequilles (*) • Breite der abstützung (*)
4500 mm	14'9"	Larghezza stabilizzatori (**) • Outriggers width (**) Largeur des bequilles (**) • Breite der abstützung (**)
650+35 mm	2'2" + 0'1"	Lunghezza • Length • Longueur • Länge
2300 mm	7'7"	Larghezza • Width • Largeur • Breite
2000 mm	6'7"	Altezza • Height • Hauteur • Höhe
1262 kg	2782 lbs	Peso (senza olio e montaggio) • Weight (without oil and fitting) Poids (sans huile et montage) • Gewicht (ohne öl und ohne)
18 l/min	5 us gal/min	Portata pompa (***) • Pump delivery (***) • Capacité de la pompe (***) • Pumpenleistung (***)
275 bar	3911 psi	Pressione • Pressure • Pression • Druck
50 l	13 us gal	Capacità serbatoio olio • Oil tank capacity • Capacité de reservoir d'huile • Öl tank inhalt

STANDARD

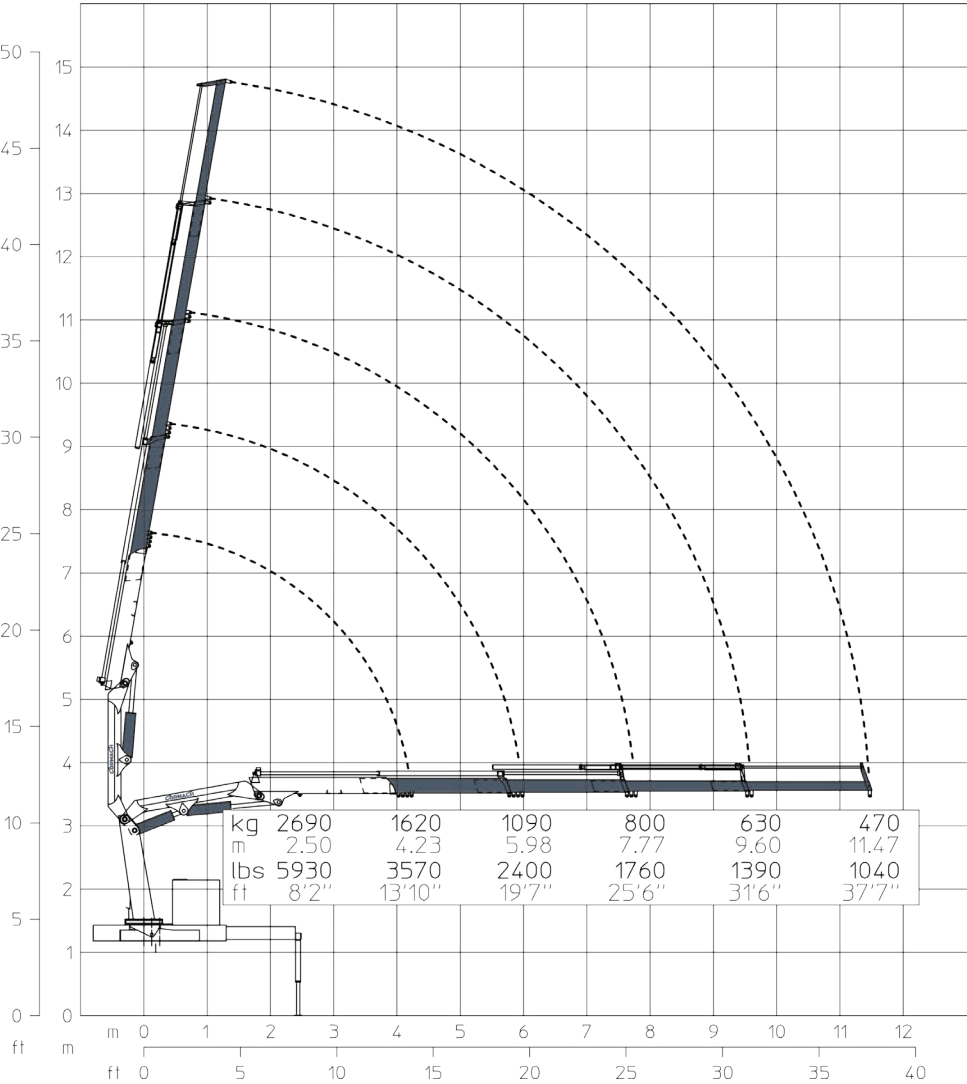


OPTIONAL



8700 E

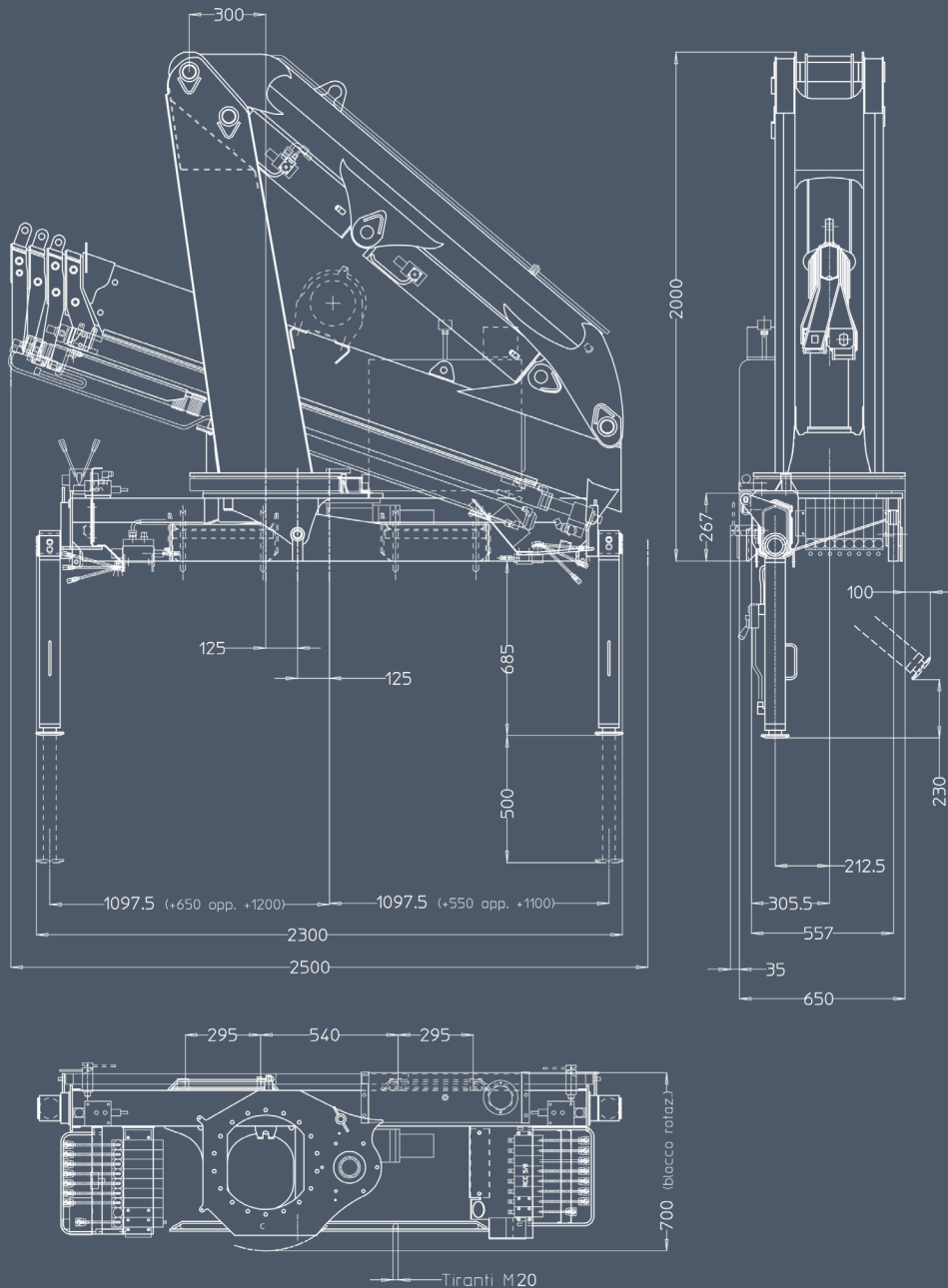
8700 E4



E4	E4	
8730 daN*m	63156 Lb*ft	Momento statico massimo al perno torretta • Max. static moment at the turret pin Moment statique max. a l'axe de la tourelle • Max. statisches ubmoment am kran Saulenbolzen
11.47 m	37'7"	Sbraccio idraulico • Hydraulic boom length Longueur du bras hydraulique • Hydraulic reichweite
820 daN*m	5932 Lb*ft	Coppia di rotazione • Slew torque • Moment de rotation • Drehmoment
29 sec 360°	29 sec 360°	Tempo di rotazione • Slewing speed • Temp de rotation • Schwenkgeschwindigkeit
1200+1100mm	3'11" + 3'7"	Uscita stabilizzatori (*) • Outriggers extensions (*) Sortie des bequilles (*) • Breite der abstützung (*)
4500 mm	14'9"	Larghezza stabilizzatori (**) • Outriggers width (**) Largeur des bequilles (**) • Breite der abstützung (**)
650+35 mm	2'2" + 0'1"	Lunghezza • Length • Longueur • Länge
2300 mm	7'7"	Larghezza • Width • Largeur • Breite
2000 mm	6'7"	Altezza • Height • Hauteur • Höhe
1350 kg	2976 lbs	Peso (senza olio e montaggio) • Weight (without oil and fitting) Poids (sans huile et montage) • Gewicht (ohne öl und ohne)
18 l/min	5 us gal/min	Portata pompa (***) • Pump delivery (***) • Capacité de la pompe (***) • Pumpenheistung (***)
275 bar	3911 psi	Pressione • Pressure • Pression • Druck
50 l	13 us gal	Capacità serbatoio olio • Oil tank capacity • Capacité de reservoir d'huile • Öl tank inhalt

STANDARD

OPTIONAL



STANDARD



Rotazione 360°
Rotation 360°
Rotation 360°
Drehbereich 360°



Stabilizzatori gru base girevoli
Tilt up outriggers
Bequilles tournants
Drehbare stützen



Comandi bilaterali
Dual Controls station
Commandes a gauche et a droite
Beidseitige bedienung



Limitatore di momento
Load limiting device
Limiteur de charge
Über lastabschal tungssystem

OPTIONAL



Cestello
Basket
Nacelle
Personenkorb



Radiocomando
Radio remote control
Radiocommandes
Funkfernsteuerung



Rotazione continua
Continuos rotation
Rotation continue
Endlos schwenkwerk



Stabilizzatori gru base estendibili idraulicamente
Outriggers with hydraulic
Stabilisateurs avec extension hydraulique
Hydraulisch ausfahrbare stützen



Traversa ausiliaria estendibile
Additional outriggers with lateral extension
Stabilisateur supplementaires avec elargissement
Ausfahrbare zusatz- stützen



Traversa ausiliaria fissa
Additional outriggers beam without extension
Stabilisateur supplementaires sans elargissement
Zusätzliche abstützbeine



Verricello
Winch
Treuil
Seilwinde



CORMAGH

Cormach s.r.l. - Via Madonnina, 27 - C.P. 199 - 25018 MONTICHIARI (BS) - ITALY
 Tel. 0039.030.9656811 - Telefax 0039.030.9656846.7.8
 E-mail: info@cormach.com - www.cormach.com

A fronte di una continua ricerca tecnologica i dati possono cambiare senza preavviso. Contattare il nostro Ufficio Commerciale per ulteriori informazioni.
 Because of continuous technology research data can change without notice. Please, contact our Commercial Dept. for further information.
 A cause de une continue recherche technologique les données peuvent changer sans préavis. Contacter notre Bureau Commercial pour des autres informations.
 Irrtum und technische Änderung vorbehalten masse und gewichte unverbindlich. Unser Vertrieb erteilt Ihnen gerne weitere Auskünfte. Bitte rufen Sie uns an.
 Debido a los continuos avances tecnológicos los datos pueden variar sin notificación previa. Para más información rogamos contactar nuestro Departamento Comercial.