

CORMACH

185000A E
185000A^x E



... ABOUT ANCIENT



KRANKAMON, PHARAOH OF EGYPT, DREAMED ABOUT HIS PYRAMID, THAT IN HIS INTENT, SHOULD BECOME THE BIGGEST EVER BUILD.

"Phew! What hard work. Is it possible that anybody can think of a better pushing system?"



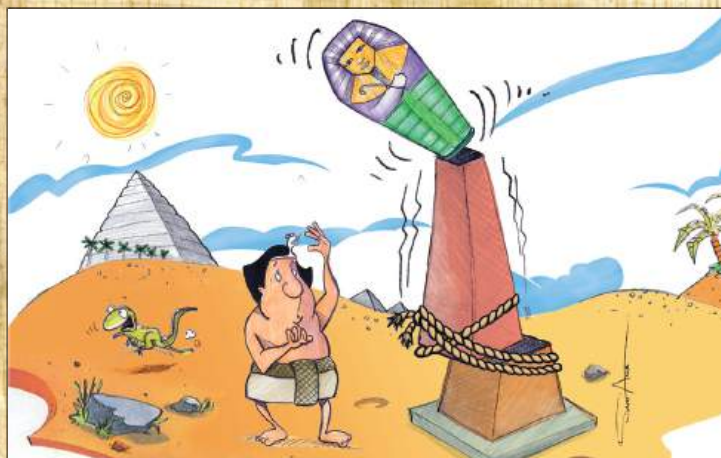
THE BUILDING PROCESS WAS SLOW BEING HIS RESOURCES LIMITED TO SLAVES AND MATERIAL.

"But, why is it such hard work using only one support?"



THE PHARAOH LIVED A SHORT AND HARD LIFE AND THE KRANKAMON PYRAMIDS REMAINED A DREAM.

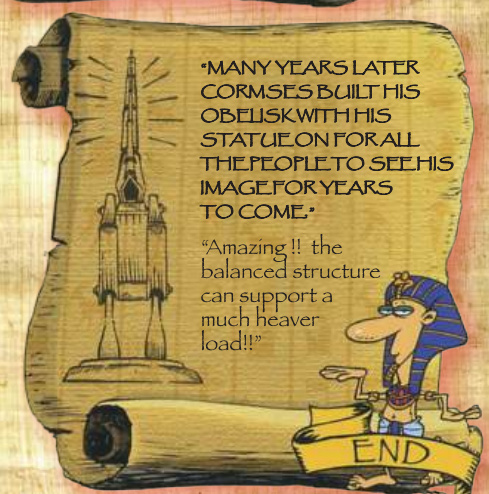
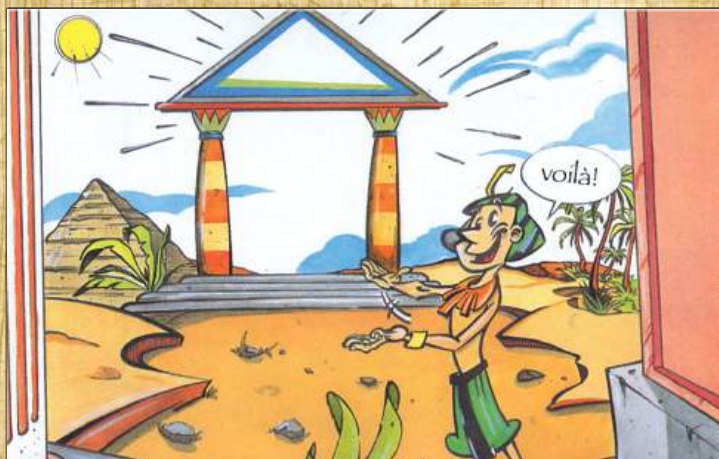
"There is something illogical in this system. The offset boom unbalances the structure."



LATER THE PHARAOH DECIDED TO BUILD AN OBELISK WITH HIS IMAGE ON TOP.

Why is the structure so weak? It cannot carry the weight of my statue!

EGYPT MANUSCRIPTS





Radiocomando.
Radio remote control.
Radiocommande.
Funkfernsteuerung.



Distributore proporzionale DANFOSS.
DANFOSS proportional control bank.
Distributeur proportionnel DANFOSS.
DANFOSS proportional Steuerventil

Angolo negativo tra 1° e 2° braccio (20 gradi).
Negative angle between 1st and 2nd boom (20 degrees).
Angle négatif entre 1^{ère} et 2^{ème} bras (20 degrés).
Negativ Winkel zwischen ersten und zweiten Arm (20 Grad).



Cilindro stabilizzatore ribaltabile 180° (OPZIONE).
180 degrees tilting stabilising cylinder (OPTIONAL).
Vérin relevante 180 degrés (OPTION).
Stutzzylinder kann 180° umgekippt werden (auf Frage).



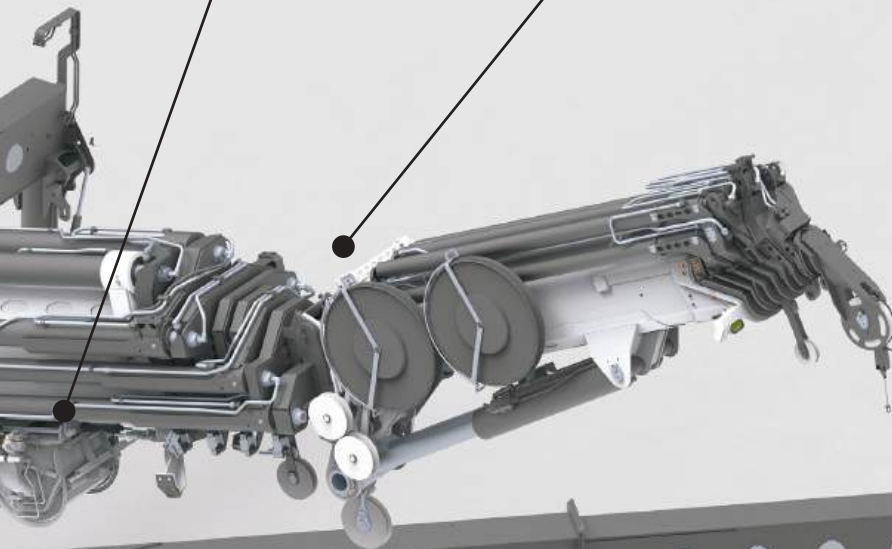
Scambiatore di calore.
Heat exchanger.
Refroidisseur.
Ölkühler.

185000A E - 185000A~~x~~ E

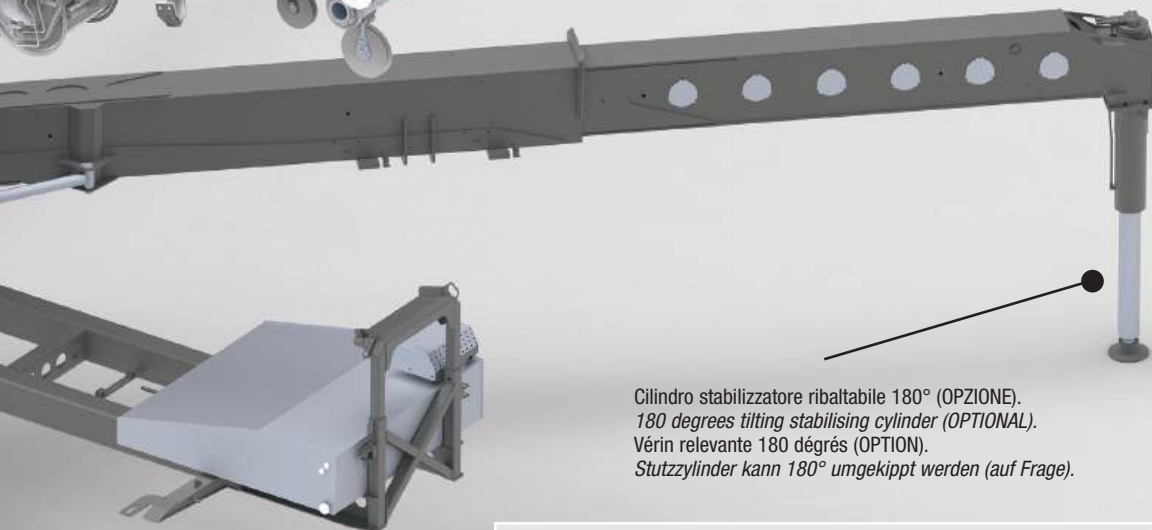


Verricello (OPZIONE).
Winch (OPTIONAL).
Treuil (OPTION).
Winde (Auf Frage).

Angolo negativo tra prolunghe e JIB (10 gradi).
Negative angle between extensions and JIB (10 degrees).
Angle négatif entre extensions et JIB (10 degrés).
Negativ Winkel zwischen Ausleger und jib (10 Grad).



Aggancio/Sgancio rapido JIB.
Quick connection and disconnection of the JIB.
Connexion rapide de JIB.
Schnellkupplung des JIB (für die Hydraulik: hydraulische Schnellkupplung).



Cilindro stabilizzatore ribaltabile 180° (OPZIONE).
180 degrees tilting stabilising cylinder (OPTIONAL).
Vérin relevante 180 degrés (OPTION).
Stützzyylinder kann 180° umgekippt werden (auf Frage).



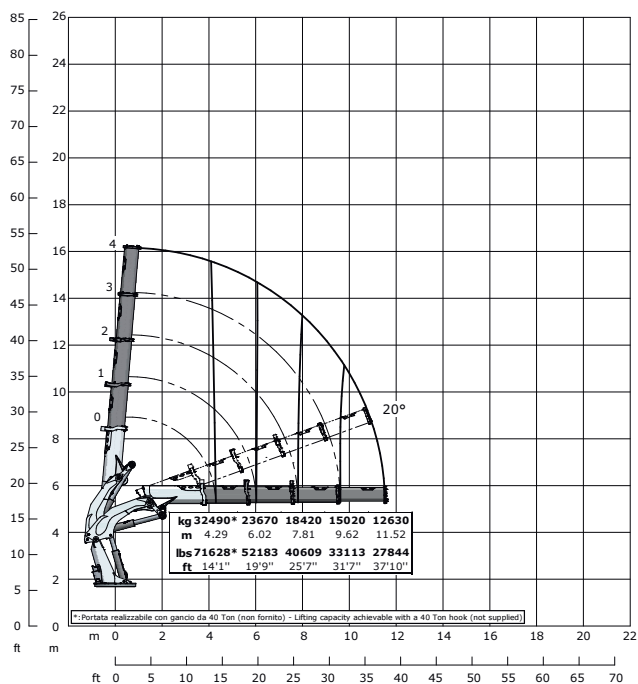
185000A E - 185000Ax E



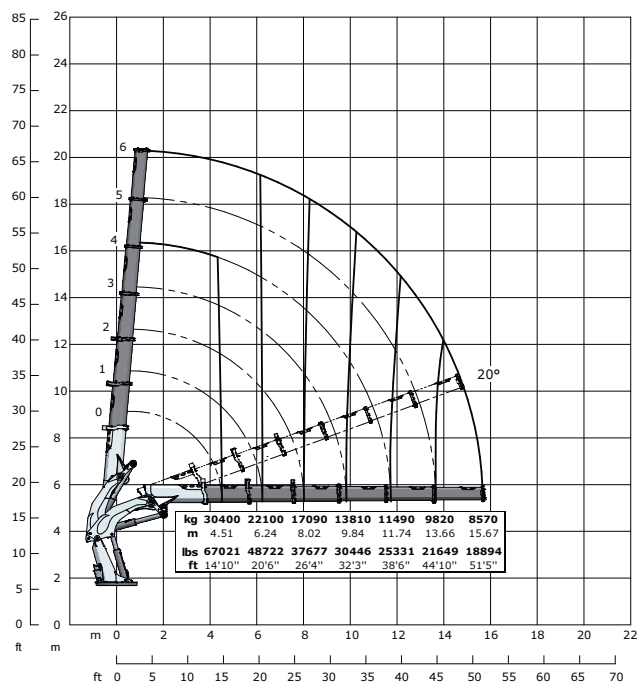


185000A E - 185000AX E

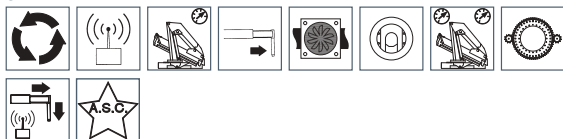
185000A E4 A.S.C. Plus



185000A E6 A.S.C. Plus



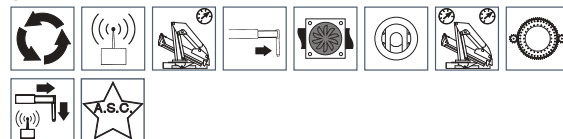
STANDARD



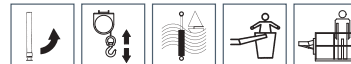
OPTIONAL



STANDARD

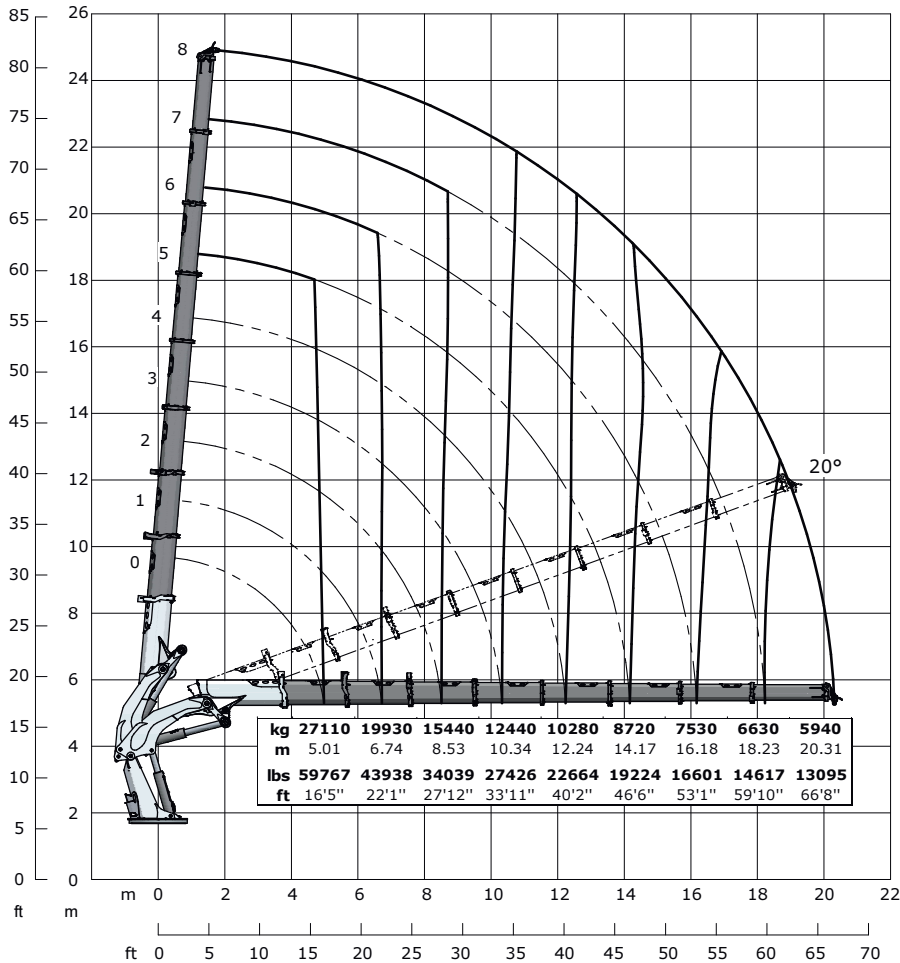


OPTIONAL



185000 E4	185000 E4		185000 E6	185000 E6
185000 da N*m	1338363 Lb*ft	Momento statico massimo al perno torretta • Max. static moment at the turret pin Moment statique max. a l'axe de la tourelle • Max. statisches ubmoment am kranseulenbolzen	185000 da N*m	1338363 Lb*ft
11.52 m	37'10"	Sbraccio idraulico • Hydraulic boom length Longueur du bras hydraulique • Hydraulic reichweite	15.67 m	51'5"
19200 da N*m	138900 Lb*ft	Coppia di rotazione • Slew torque • Moment de rotation • Drehmoment	19200 da N*m	138900 Lb*ft
360° 100 sec.	360° 100 sec.	Tempo di rotazione • Slewing speed • Temp de rotation • Schwenkgeschwindigkeit	360° 100 sec.	360° 100 sec.
19346 Kg	42651 lbs	Peso (senza olio e montaggio) • Weight (without oil and fitting) Poids (sans huile et montage) • Gewicht (ohne öl und ohne)	20382 Kg	44935 lbs
20770 Kg	45790 lbs	Peso (senza olio e montaggio, stab. a X) • Weight (without oil and fitting, Version with outrigger X) Poids (sans huile et montage, version avec bequilles a X) • Gewicht (ohne öl und ohne, abstützung X)	21770 Kg	47995 lbs
100 l. min	26 us gal min	Portata pompa (***) • Pump delivery (***) • Capacité de la pompe (***) • Pumpenheistung (***)	100 l. min	26 us gal min
330 bar	4692 psi	Pressione • Pressure • Pression • Druck	330 bar	4692 psi
450 l	118 Us gal	Capacità serbatoio olio • Oil tank capacity • Capacité de reservoir d'huile • Öl tank inhalt	450 l	118 Us gal

185000A E8 A.S.C. Plus



STANDARD



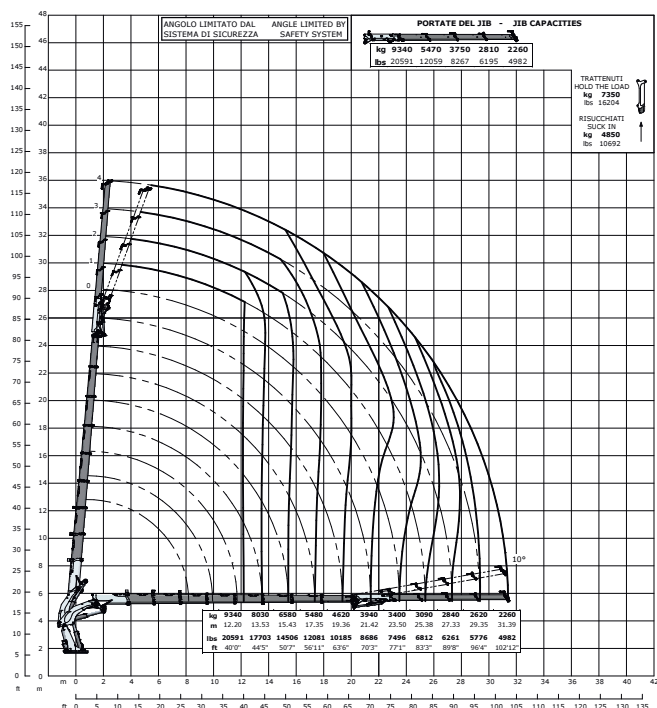
OPTIONAL



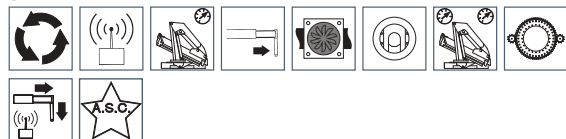
185000 E8	185000 E8	
185000 da N*m	1338363 Lb*ft	Momento statico massimo al perno torretta • Max. static moment at the turret pin Moment statique max. a l'axe de la tourelle • Max. statisches ubmoment am kranseulenbolzen
20.31 m	66'8"	Sbraccio idraulico • Hydraulic boom length Longueur du bras hydraulique • Hydraulic reichweite
19200 da N*m	138900 Lb*ft	Coppia di rotazione • Slew torque • Moment de rotation • Drehmoment
360° 100 sec.	360° 100 sec.	Tempo di rotazione • Slewing speed • Temp de rotation • Schwenkgeschwindigkeit
21295 Kg	46868 lbs	Peso (senza olio e montaggio) • Weight (without oil and fitting) Poids (sans huile et montage) • Gewicht (ohne öl und ohne)
22630 Kg	49891 lbs	Peso (senza olio e montaggio, stab. a X) • Weight (without oil and fitting, Version with outrigger X) Poids (sans huile et montage, version avec bequilles a X) • Gewicht (ohne öl und ohne, abstützung X)
100 l. min	26 us gal min	Portata pompa (***) • Pump delivery (***) • Capacité de la pompe (***) • Pumpenheistung (***)
330 bar	4692 psi	Pressione • Pressure • Pression • Druck
450 l	118 Us gal	Capacità serbatoio olio • Oil tank capacity • Capacité de reservoir d'huile • Öl tank inhalt

185000A E - 185000AX E

185000A E8F304L A.S.C. Plus



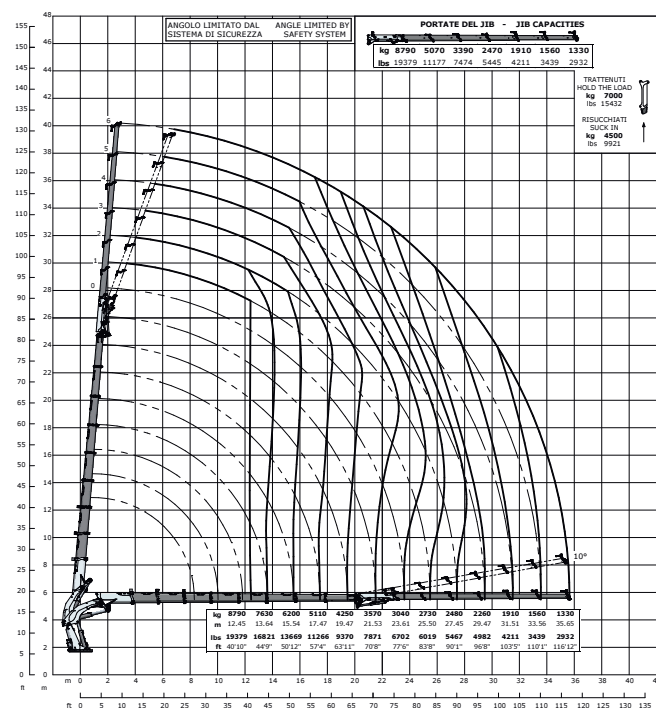
STANDARD



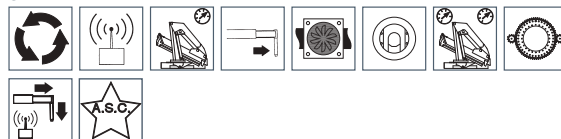
OPTIONAL



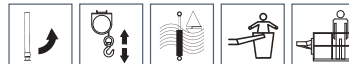
185000A E8F306L A.S.C. Plus



STANDARD

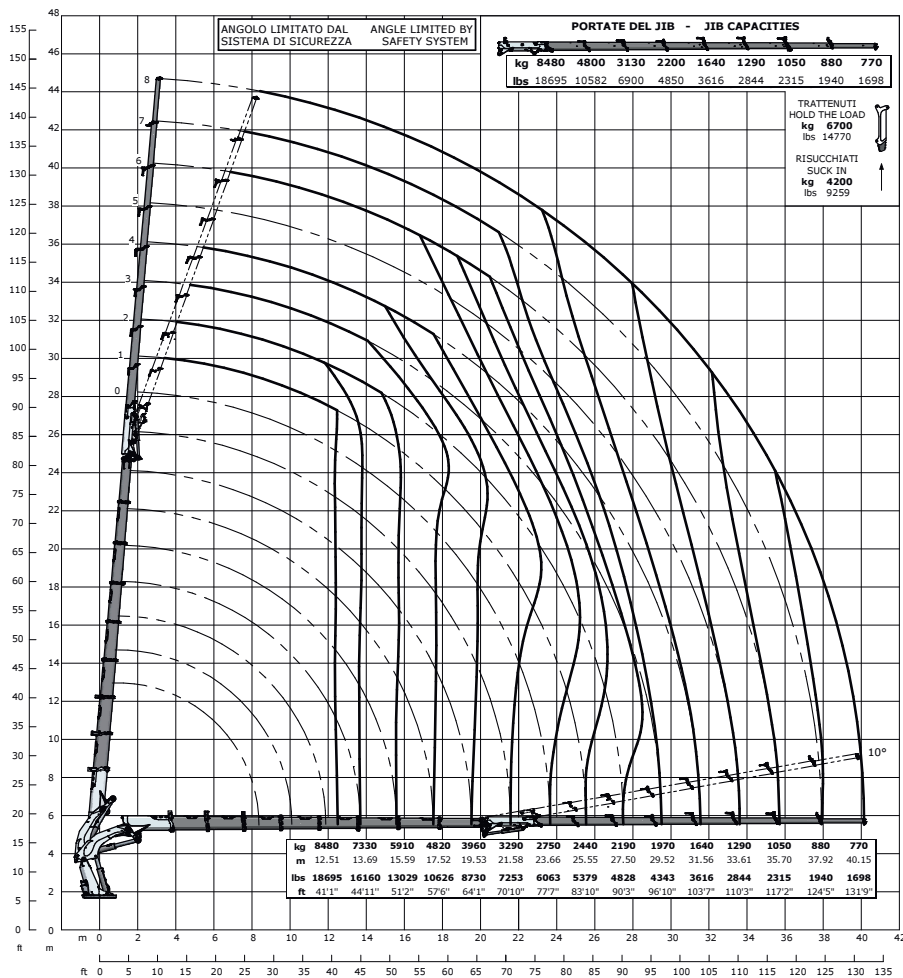


OPTIONAL



185000 E8 F304L	185000 E8 F304L		185000 E8 F306L	185000 E8 F306L
185000 da N*m	1338363 Lb*ft	Momento statico massimo al perno torretta • Max. static moment at the turret pin Moment statique max. a l'axe de la tourelle • Max. statisches ubmoment am kranseulenbolzen	185000 da N*m	1338363 Lb*ft
31.39 m	102'12"	Sbraccio idraulico • Hydraulic boom length Longueur du bras hydraulique • Hydraulic reichweite	35.65 m	116'12"
19200 da N*m	138900 Lb*ft	Coppia di rotazione • Slew torque • Moment de rotation • Drehmoment	19200 da N*m	138900 Lb*ft
360° 100 sec.	360° 100 sec.	Tempo di rotazione • Slewing speed • Temp de rotation • Schwenkgeschwindigkeit	360° 100 sec.	360° 100 sec.
23165 Kg	51070 lbs	Peso (senza olio e montaggio) • Weight (without oil and fitting) Poids (sans huile et montage) • Gewicht (ohne öl und ohne)	23530 Kg	51875 lbs
24540 Kg	54101 lbs	Peso (senza olio e montaggio, stab. a X) • Weight (without oil and fitting, Version with outrigger X) Poids (sans huile et montage, version avec bequilles a X) • Gewicht (ohne öl und ohne, abstützung X)	24900 Kg	54895 lbs
100 l. min	26 us gal min	Portata pompa (***), Pump delivery (***), Capacité de la pompe (***), Pumpenheistung (***)	100 l. min	26 us gal min
330 bar	4692 psi	Pressione • Pressure • Pression • Druck	330 bar	4692 psi
450 l	118 Us gal	Capacità serbatoio olio • Oil tank capacity • Capacité de reservoir d'huile • Öl tank inhalt	450 l	118 Us gal

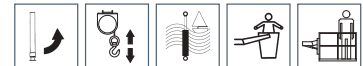
185000A E8F308L A.S.C. Plus



STANDARD

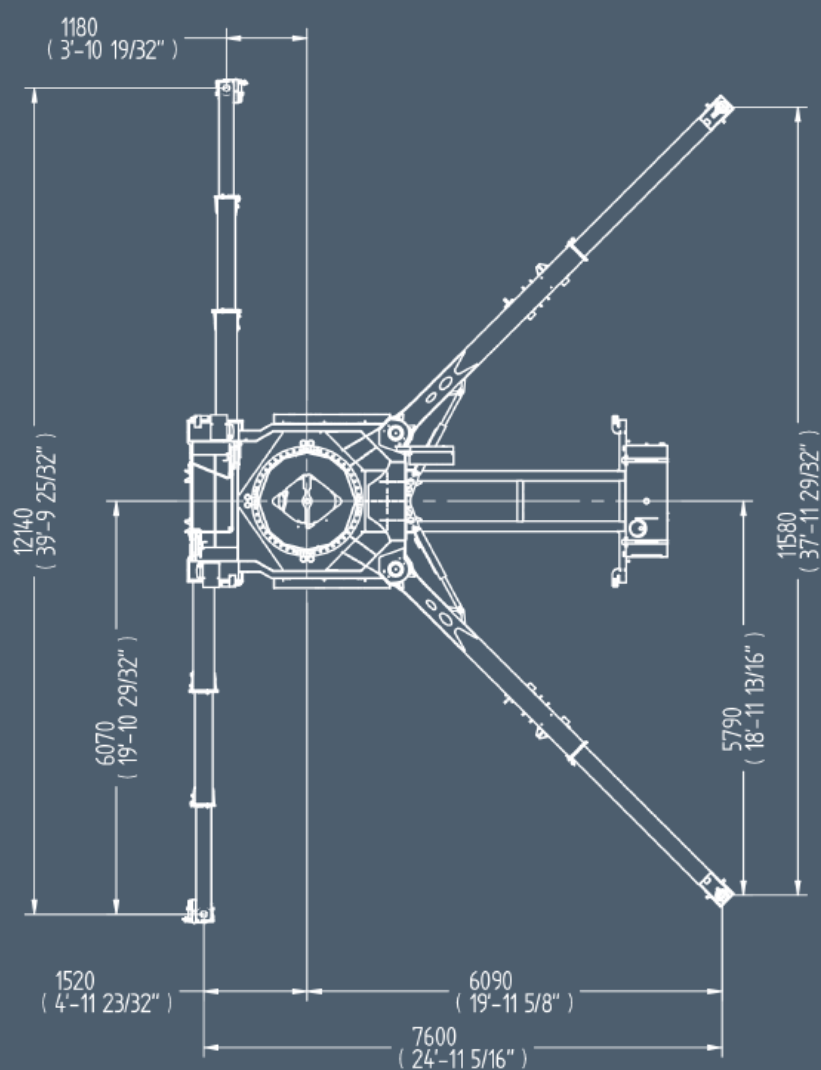
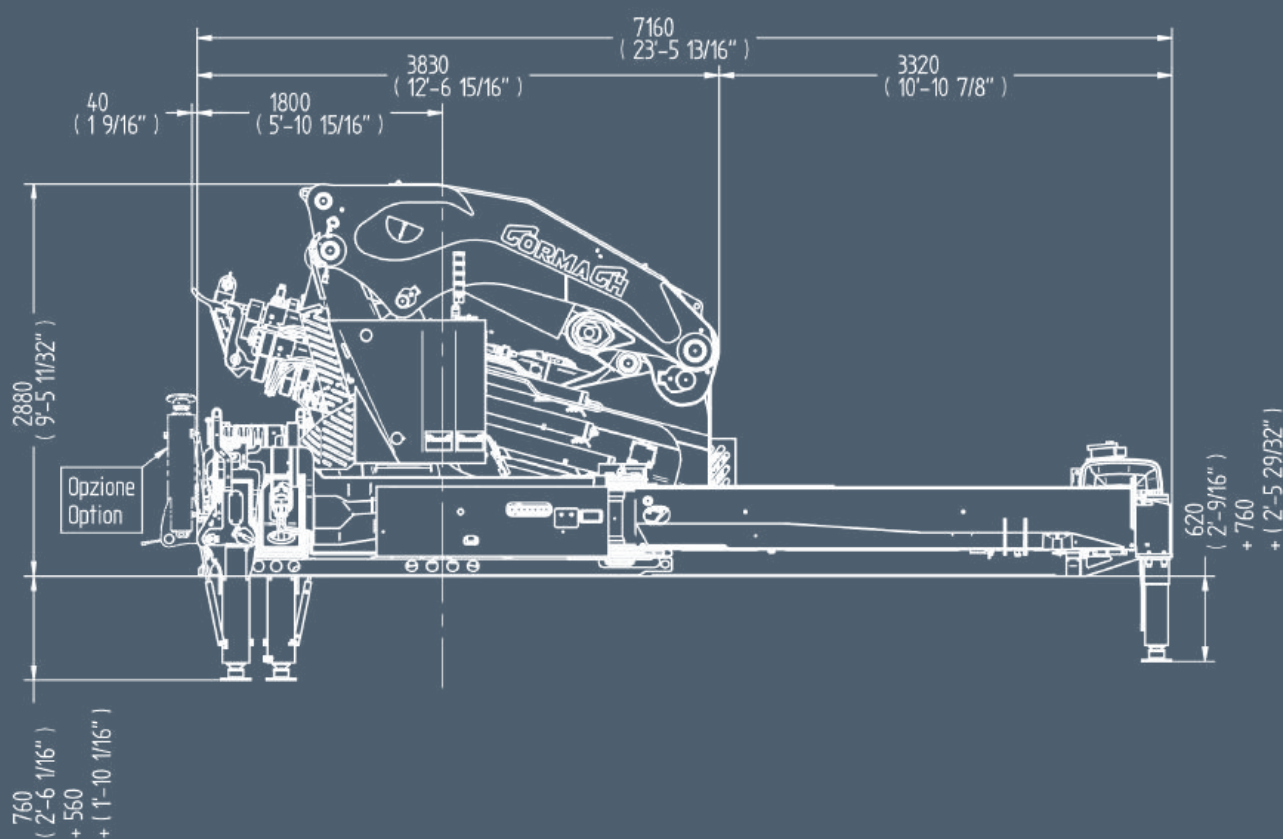


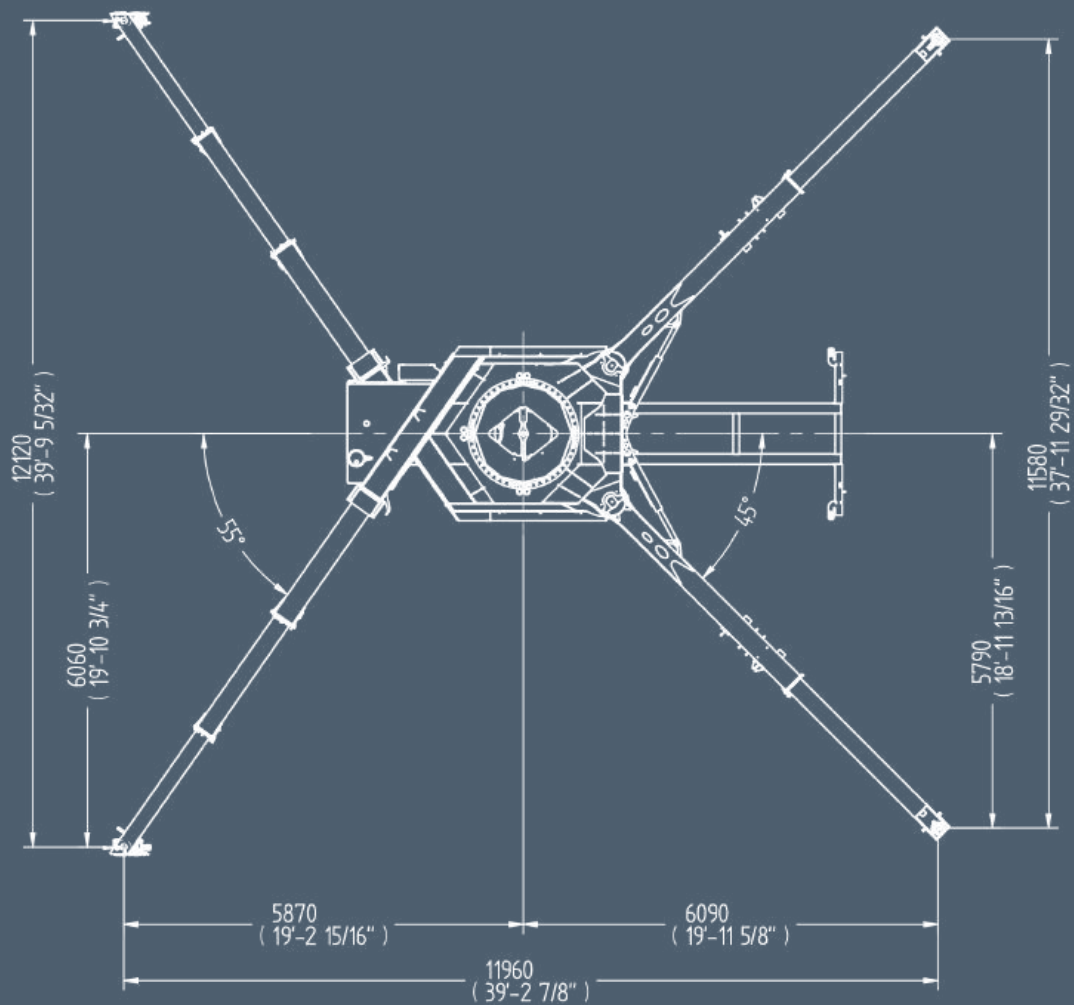
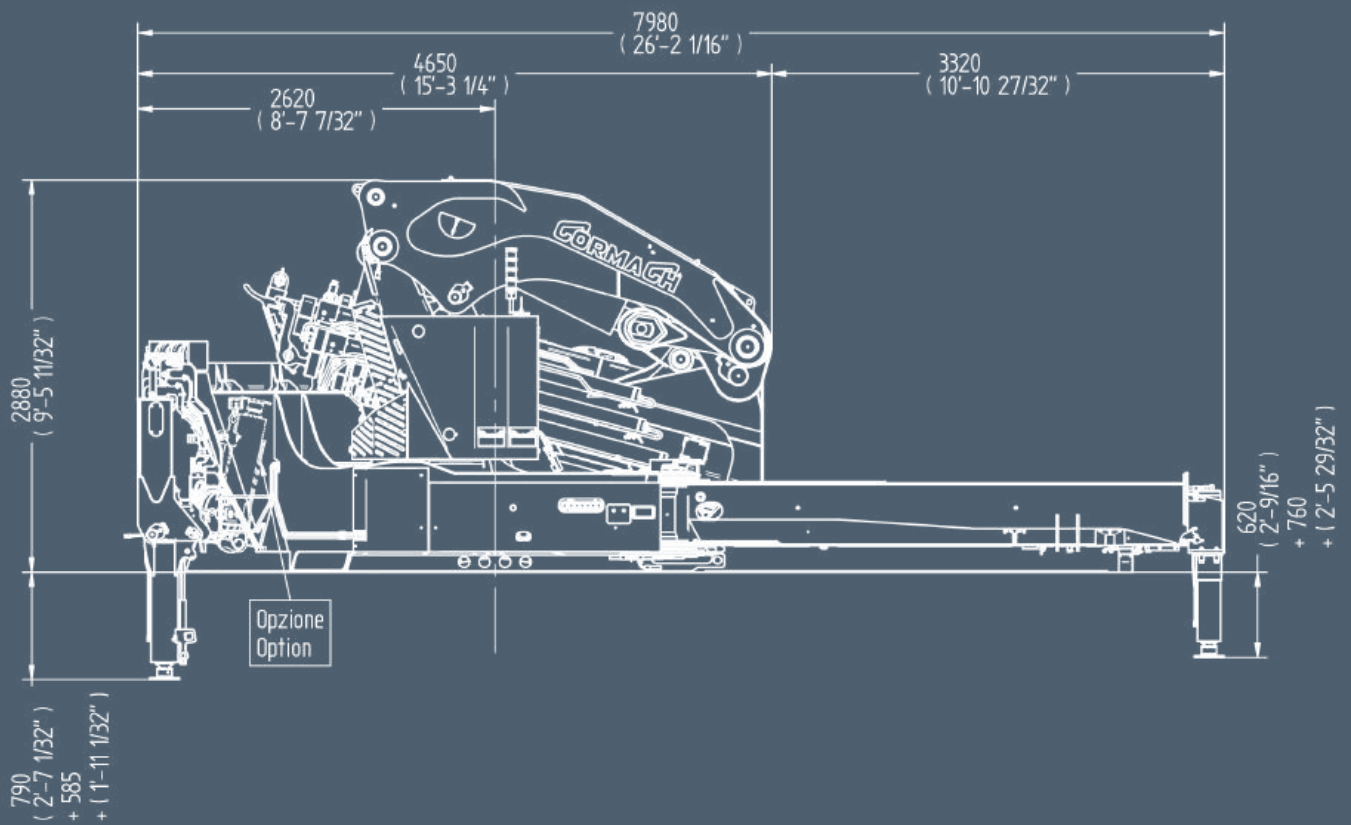
OPTIONAL



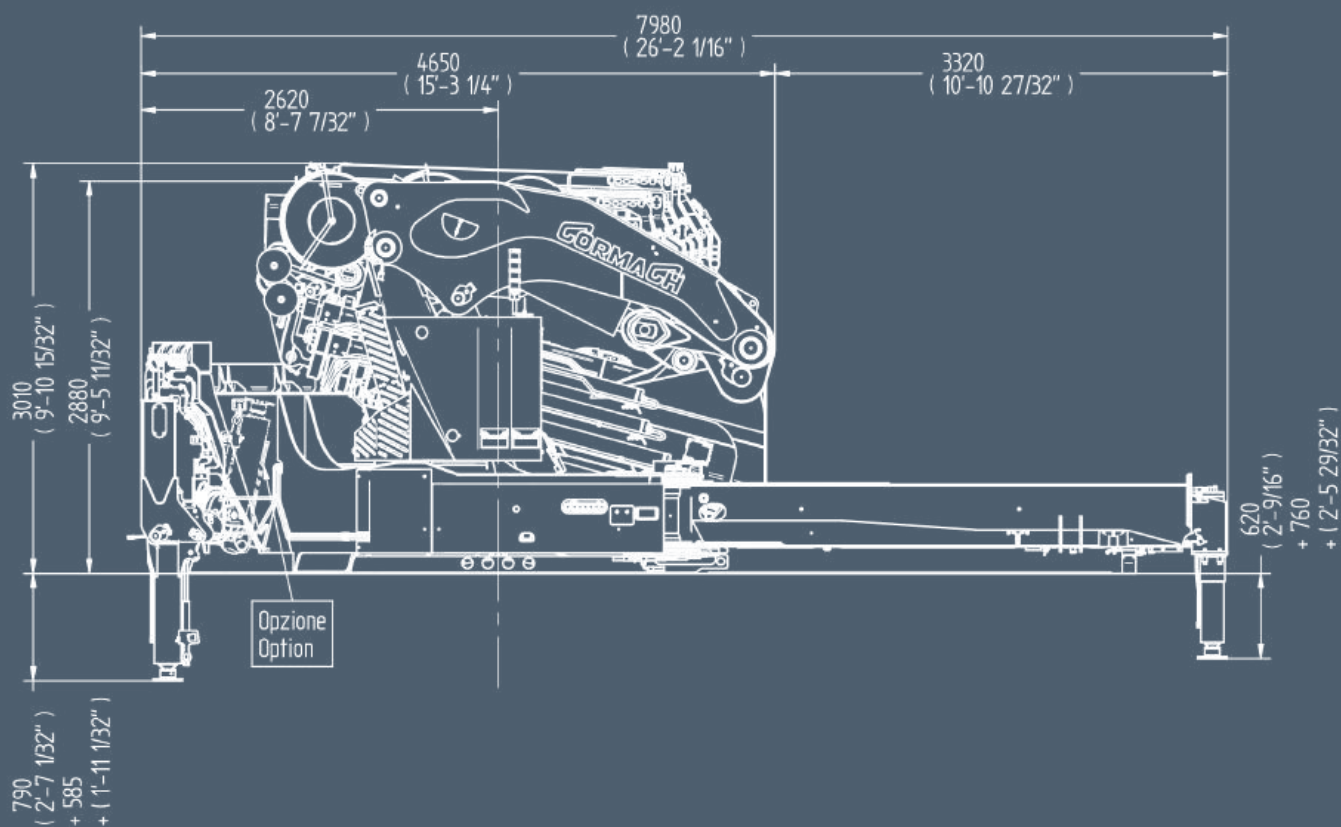
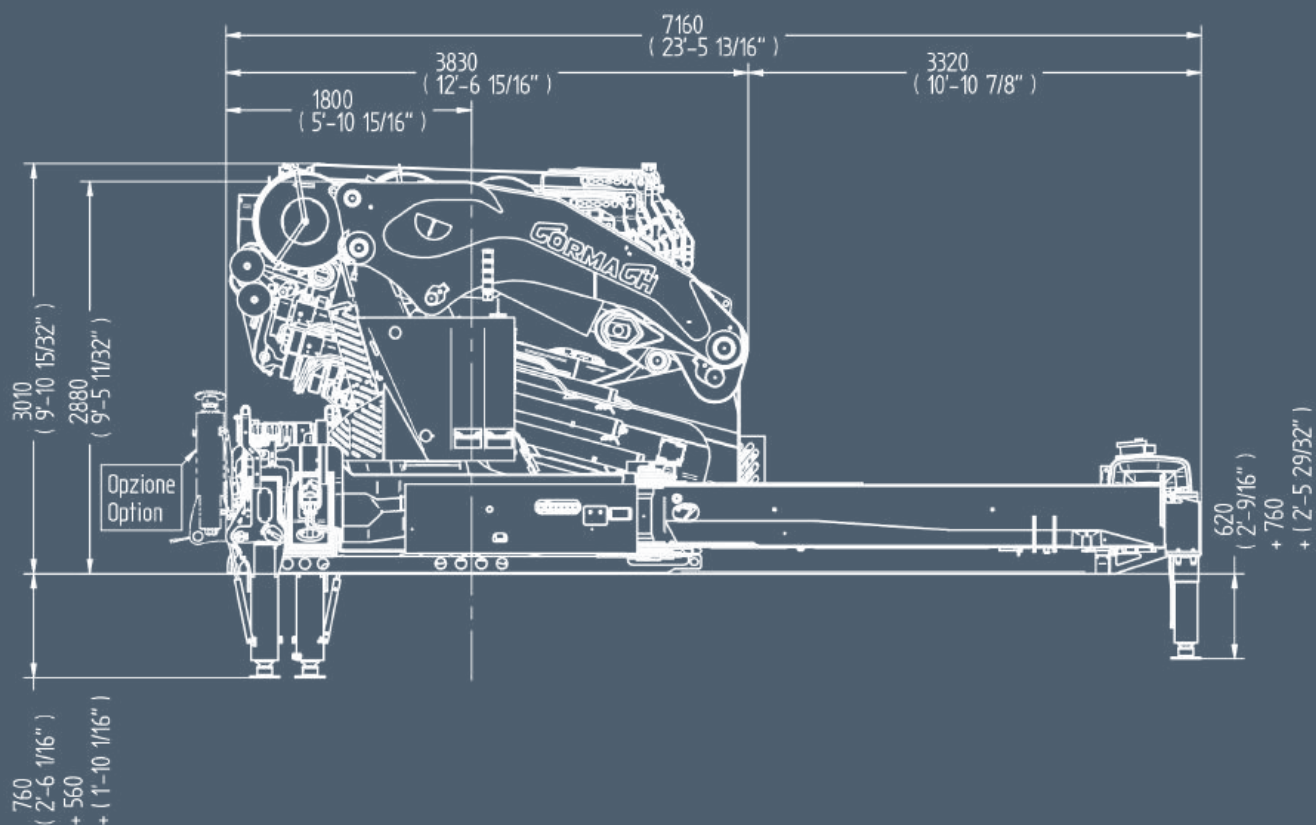
185000 E8 F308L	185000 E8 F308L	
185000 da N*m	1338363 Lb*ft	Momento statico massimo al perno torretta • Max. static moment at the turret pin Moment statique max. a l'axe de la tourelle • Max. statisches ubmoment am kransaulenbolzen
40.15 m	131'9"	Sbraccio idraulico • Hydraulic boom length Longueur du bras hydraulique • Hydraulic reichweite
19200 da N*m	138900 Lb*ft	Coppia di rotazione • Slew torque • Moment de rotation • Drehmoment
360° 100 sec.	360° 100 sec.	Tempo di rotazione • Slewing speed • Temp de rotation • Schwenkgeschwindigkeit
23826 Kg	52527 lbs	Peso (senza olio e montaggio) • Weight (without oil and fitting) Poids (sans huile et montage) • Gewicht (ohne öl und ohne)
25200 Kg	55556 lbs	Peso (senza olio e montaggio, stab. a X) • Weight (without oil and fitting, Version with outrigger X) Poids (sans huile et montage, version avec bequilles a X) • Gewicht (ohne öl und ohne, abstützung X)
100 l. min	26 us gal min	Portata pompa (***) • Pump delivery (***) • Capacité de la pompe (***) • Pumpenheistung (***)
330 bar	4692 psi	Pressione • Pressure • Pression • Druck
450 l	118 Us gal	Capacità serbatoio olio • Oil tank capacity • Capacité de reservoir d'huile • Öl tank inhalt

185000A E - 185000A~~x~~ E





185000A E - 185000A~~x~~ E



STANDARD



Rotazione continua
Continuous rotation
Rotation continue
Endlos schwenkwerk



Stabilizzatori gru base estendibili idraulicamente
Outriggers with hydraulic extension
Stabilisateurs avec extension hydraulique
Hydraulisch ausfahrbare stützen



Doppio limitatore di momento
Double load limiting device
Double limiteur de charge
Doppel Überlastabschaltungssystem



Automatic Speed Control
Automatic Speed Control
Automatic Speed Control
Automatic Speed Control



Radiocomando
Radio remote control
Radiocommandes
Funkfernsteuerung



Scambiatore di calore
Oil cooler
Echangeur de chaleur
Ölkühler



Doppia rotazione
Double rotation
Rotation double
Umschiffer umdrehung



Limitatore di momento
Load limiting device
Limiteur de charge
Überlastabschaltungssystem



Piastre di appoggio maggiorate
Large ground plates
Plaques stabilisateurs
Bodenplatten



Controllo stabilizzatori da Radiocomando
Control of stabilizers by Radio Remote Control
Contrôle bequilles par Radiocommande
Steuerung der Abstützungen über die Funkfernsteuerung

OPTIONAL



Stabilizzatori gru base girevoli
Tilt up outriggers
Bequilles tournants
Drehbare stützen



Verricello
Winch
Treuil
Seilwinde



Trattamento marino della gru
Marine treatment of the crane
Traitement marine de la grue
Marine behandlung des kranes



Cestello
Basket
Nacelle
Personenkorb



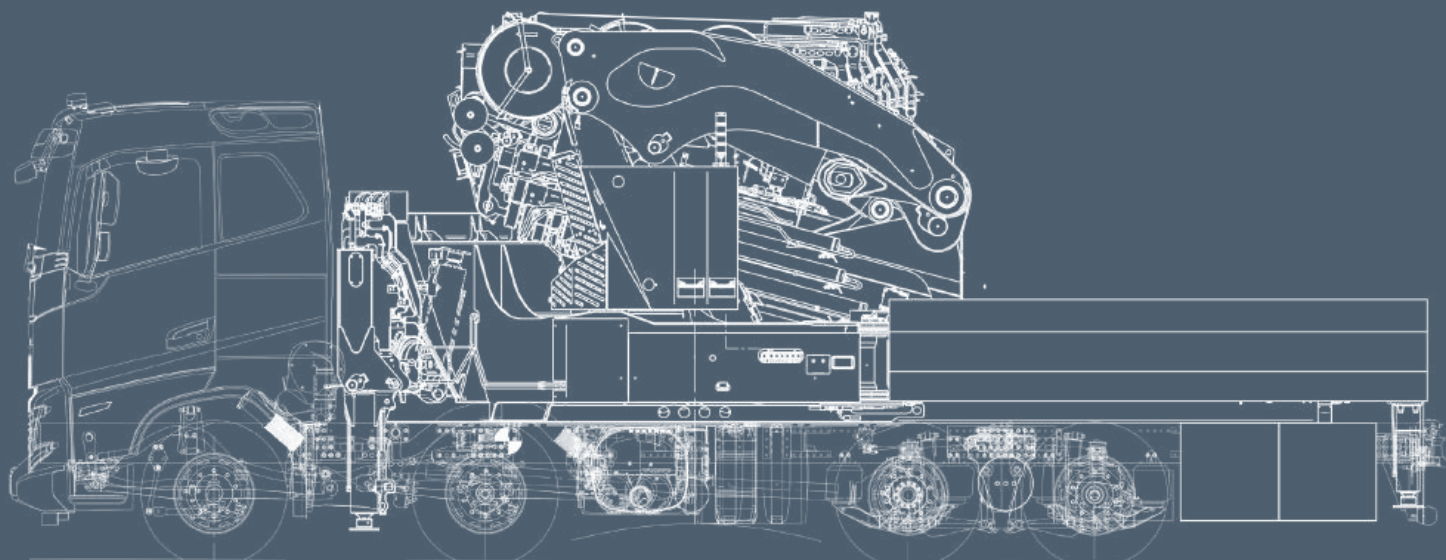
Piattaforma autolivellante
Self leveling platform
Plateforme auto nivelante
Arbeitskorb mit automatische Ausgleich Anlage



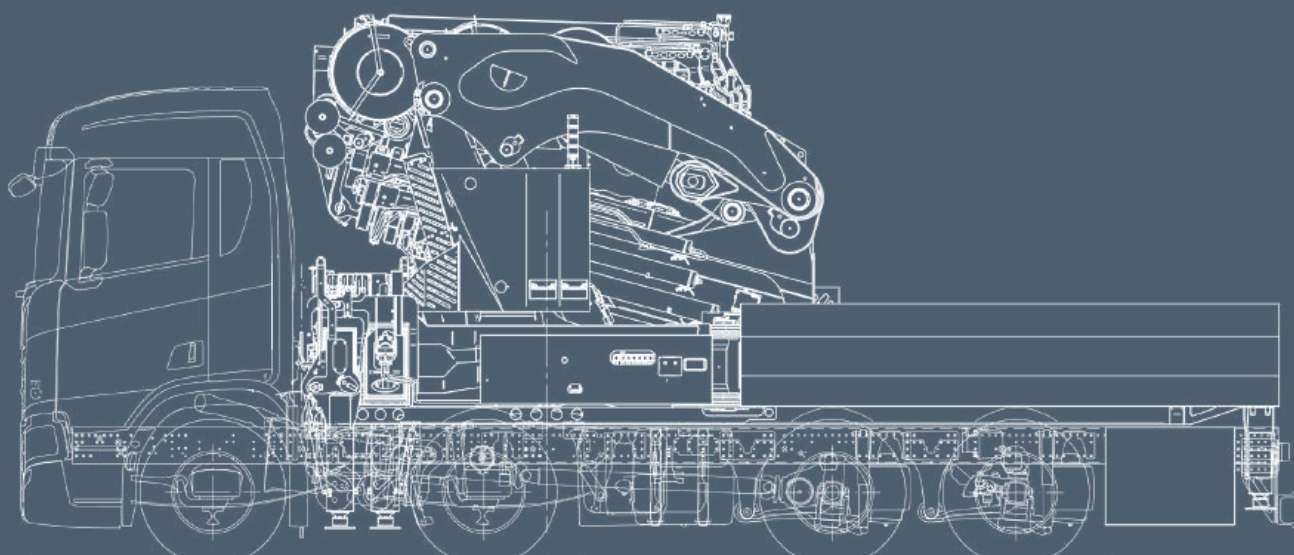
185000A E - 185000A~~x~~ E

[illegible]

***Con gancio opzionale/*With optional hook/*Avec crochet en option/*Mit sonder hacken**



E8F304L		E8F306L		E8308L	
m/ft	kg/lbs	m/ft	kg/lbs	m/ft	kg/lbs
12.20	9340	12.45	8790	12.51	8480
40'0"	20591	40'10"	19379	41'1"	18695
13.53	8030	13.64	7630	13.69	7330
44'5"	17703	44'9"	16821	44'11"	16160
15.43	6580	15'54	6200	15.59	5910
50'7"	14506	50'12"	13669	51'2"	13029
17.35	5480	17.47	5110	17.52	4820
56'11"	12081	57'4"	11266	57'6"	10626
19.36	4620	19.47	4250	19.53	3960
63'6"	10185	63'11"	9370	64'1"	8730
21.42	3940	21.53	3570	21.58	3290
70'3"	8686	70'8"	7871	70'10"	7253
23.50	3400	23.61	3040	23.66	2750
77'1"	7496	77'6"	6702	77'7"	6063
25.38	3090	25.50	2730	25.55	2440
83'3"	6812	83'8"	6019	83'10"	5379
27.33	2840	27.45	2480	27.50	2190
89'8"	6261	90'1"	5467	90'3"	4828
29.35	2620	29.47	2260	29.52	1970
96'4"	5776	96'8"	4982	96'10"	4343
31.39	2260	31.51	1910	31.56	1640
102'12"	4982	103'5"	4211	103'7"	3616
		33.56	1560	33.61	1290
		110'1"	3439	110'3"	2844
		35.65	1330	35.70	1050
		116'12"	2932	117'2"	2315
				37.92	880
				124'5"	1940
				40.15	770
				131'9"	1698



185000A E - 185000Ax E







CORMAGH

Cormach s.r.l. - Via Madonnina, 27 - C.P. 199 - 25018 MONTICHIARI (BS) - ITALY
 Tel. 0039.030.9656811 - Telefax 0039.030.9656846.7.8
 E-mail: info@cormach.com - www.cormach.com

A fronte di una continua ricerca tecnologica i dati possono cambiare senza preavviso. Contattare il nostro Ufficio Commerciale per ulteriori informazioni.
 Because of continuous technology research data can change without notice. Please, contact our Commercial Dept. for further information.
 A cause de une continue recherche technologique les données peuvent changer sans préavis. Contacter notre Bureau Commercial pour des autres informations.
 Irrtum und technische Änderung vorbehalten masse und gewichte unverbindlich. Unser Vertrieb erteilt Ihnen gerne weitere Auskünfte. Bitte rufen Sie uns an.
 Debido a los continuos avances tecnológicos los datos pueden variar sin notificación previa. Para más información rogamos contacten nuestro Departamento Comercial.